



Microsoft Dynamics® GP
Integration Manager Quick Start

Copyright

Copyright © 2012 Microsoft. All rights reserved.

Limitation of liability

This document is provided "as-is." Information and views expressed in this document, including URL and other Internet Web site references, may change without notice. You bear the risk of using it.

Some examples depicted herein are provided for illustration only and are fictitious. No real association or connection is intended or should be inferred.

Intellectual property

This document does not provide you with any legal rights to any intellectual property in any Microsoft product.

You may copy and use this document for your internal, reference purposes.

Trademarks

Microsoft, Microsoft Dynamics, Access, Windows, Windows Server, Windows Vista, and Visual Basic are trademarks of the Microsoft group of companies. FairCom and c-tree Plus are trademarks of FairCom Corporation and are registered in the United States and other countries.

All other trademarks are property of their respective owners.

Warranty disclaimer

Microsoft Corporation disclaims any warranty regarding the sample code contained in this documentation, including the warranties of merchantability and fitness for a particular purpose.

License agreement

Use of this product is covered by a license agreement provided with the software product. If you have any questions, please call the Microsoft Dynamics GP Customer Assistance Department at 800-456-0025 (in the U.S. or Canada) or +1-701-281-6500.

Publication date

December 2012

Contents

Introduction	2
What's in this manual.....	2
Prerequisites.....	3
Symbols and conventions	3
Resources available from the Help menu.....	4
Send us your documentation comments	5
Part 1: Getting started	8
Chapter 1: Starting Integration Manager	9
Starting Integration Manager.....	9
The Integration Manager toolbar.....	10
Shortcut keys	11
The Integration Manager menus	12
Chapter 2: Common terminology	15
Source	15
Source adapters	15
Integration Manager engine.....	15
Destination.....	15
Destination adapters.....	15
Destination mappings	16
Query	16
Query relationship.....	16
Part 2: Building integrations	18
Chapter 3: Creating integrations	19
Creating a new integration	19
Chapter 4: Adding sources	21
Understanding sources	21
Removing duplicate sources	22
Understanding the source files	23
Creating the GL Header query.....	24
Previewing source data.....	27
Creating the GL Line query.....	28
Chapter 5: Creating query relationships	31
Creating relationships	31
Chapter 6: Adding a destination	33
Understanding destinations	33
Adding the Microsoft Dynamics GP destination.....	33

Chapter 7: Mapping source data to the destination	35
Using the Integration Mapping window.....	35
Mapping fields	36
Mapping line items for the transaction.....	37
Setting options for the General Journal destination	39
Part 3: Running an integration	42
Chapter 8: Running the integration	43
Preparing to run the integration	43
Running the integration.....	45
Chapter 9: Verifying the results	47
Verifying the integration results	47
What to do next.....	48
Glossary	49
Index	51

Introduction

Integration Manager for Microsoft Dynamics® GP is a tool designed to help you move data quickly and easily between applications, without the need for custom programming or extensive knowledge of application databases. You can use this manual to become familiar with Integration Manager.

In the Integration Manager Quick Start guide, you use simple tab-delimited text files as data sources and Microsoft Dynamics GP as the destination, but you are not limited to this kind of integration. You can combine many source and destination adapters to create integrations that meet your needs. Regardless of which combinations of sources and destinations you eventually use, the steps to building and running integrations are basically the same.

Basic steps for creating integrations	
Step 1	Open a new integration.
Step 2	Add a source.
Step 3	Set source properties or establish query relationships, depending on which source adapter you are using.
Step 4	Add a destination (and provide destination settings if the adapter requires them).
Step 5	Map the source data to the destination.
Step 6	Run the integration.

Regardless of whether you've used other integration tools or you're new to integration technology, you can use this manual to familiarize yourself with Integration Manager.

This introduction includes the following information:

- [What's in this manual](#)
- [Prerequisites](#)
- [Symbols and conventions](#)
- [Resources available from the Help menu](#)
- [Send us your documentation comments](#)

What's in this manual

This manual is a hands-on learning tool that you can use to become familiar with Integration Manager. If you have used other data integration tools, use this manual to understand how Integration Manager handles integrations.

This manual shows you how to create an integration that extracts data from an ODBC/text source and integrates it into Microsoft Dynamics GP.

To view information about the release of Integration Manager that you're using and which adapters are installed, choose **Help > About Integration Manager**.

The manual is divided into the following parts:

- [Part 1, Getting started](#), explains how to start Integration Manager and discusses the terminology used in the integration process.
- [Part 2, Building integrations](#), describes the steps used to create an integration that extracts data from an ODBC/text source and integrates it into the general

ledger for Microsoft Dynamics GP. By working through the steps, you gain a basic understanding of Integration Manager.

- [Part 3, Running an integration](#), explains how to prepare to run the integration, as well as how to run it and verify the results.

After you are familiar with the steps presented in this manual, you can continue to the Integration Manager User’s Guide, which provides detailed information about Integration Manager and the adapters.

Prerequisites

This manual makes the following assumptions.

- You are familiar with the Microsoft Dynamics GP application.
- Knowledge of integration products and experience working with data in tabular format is helpful, but it is not essential to perform the tasks discussed in this manual.
- You are using the Microsoft Dynamics GP sample company. If you are not using the sample company, the sample data files might not be in the correct format and might not work with your company without modification. You can modify the structure in the text files by opening these files in a text editor, such as Notepad.
- Integration Manager is already installed. Because the tasks are arranged in sequential order, it’s important that you perform the tasks in the order they are presented.



This manual uses the GLHEADER.txt and GLLINE.txt sample files. Before you begin, be sure these files exist in the Samples folder, usually located in C:\Program Files\Microsoft Dynamics\Integration Manager\Samples. If you cannot locate the sample files at this location, browse to the location where Integration Manager was installed. If you still cannot find these files, contact your system administrator or Microsoft Dynamics GP Technical Support.



General Ledger is a module included with Microsoft Dynamics GP. This manual uses a General Ledger integration as an example of an integration source and destination.

Symbols and conventions

For definitions of unfamiliar terms, see the glossary in the manual or refer to the glossary in Help.

Symbol	Description
	The light bulb symbol indicates helpful tips, shortcuts, and suggestions.
	The warning symbol indicates situations you should be especially aware of when completing tasks.

This manual uses the following conventions to refer to sections, navigation, and other information.

Convention	Description
<i>Creating a batch</i>	Italicized type indicates the name of a section or procedure.
File >> Print or File > Print	The (>>) or (>) symbol indicates a sequence of actions, such as selecting items from a menu or toolbar, or pressing buttons in a window. This example directs you to go to the File menu and choose Print .
TAB or ENTER	All capital letters indicate a key or a key sequence.

Resources available from the Help menu

The Microsoft Dynamics GP Help menu gives you access to user assistance resources on your computer, as well as on the Web.

Contents

Opens the Help file for the active Microsoft Dynamics GP component, and displays the main “contents” topic. To browse a more detailed table of contents, click the Contents tab above the Help navigation pane. Items in the contents topic and tab are arranged by module. If the contents for the active component includes an “Additional Help files” topic, click the links to view separate Help files that describe additional components.

To find information in Help by using the index or full-text search, click the appropriate tab above the navigation pane, and type the keyword to find.

To save the link to a topic in the Help, select a topic and then select the Favorites tab. Click Add.

Index

Opens the Help file for the active Microsoft Dynamics GP component, with the Index tab active. To find information about a window that’s not currently displayed, type the name of the window, and click Display.

About this window

Displays overview information about the current window. To view related topics and descriptions of the fields, buttons, and menus for the window, choose the appropriate link in the topic. You also can press F1 to display Help about the current window.

Lookup

Opens a lookup window, if a window that you are viewing has a lookup window. For example, if the Checkbook Maintenance window is open, you can choose this item to open the Checkbooks lookup window.

Show Required Fields

Highlights fields that are required to have entries. Required fields must contain information before you can save the record and close the window. You can change the font color and style used to highlight required fields. In the navigation pane for the Microsoft Dynamics GP home page, choose User Preferences and then choose Display.

Printable Manuals

Displays a list of manuals in Adobe Acrobat .pdf format, which you can print or view.

What's New

Provides information about enhancements that were added to Microsoft Dynamics GP since the last major release.

Documentation and resources on the web

Opens a Web page that provides links to a variety of Web-based user assistance resources. Access to some items requires registration for a paid support plan.

Customer Feedback Options

Provides information about how you can join the Customer Experience Improvement Program to improve the quality, reliability, and performance of Microsoft® software and services.

Send us your documentation comments

We welcome comments regarding the usefulness of the Microsoft Dynamics GP documentation. If you have specific suggestions or find any errors in this manual, send your comments by e-mail to the following address: bizdoc@microsoft.com.

To send comments about specific topics from within Help, click the Documentation Feedback link, which is located at the bottom of each Help topic.

Note: By offering any suggestions to Microsoft, you give Microsoft full permission to use them freely.

Part 1: Getting started

This part explains how to start Integration Manager and discusses the basic terminology used in the integration process.

The information is divided into the following chapters:

- [Chapter 1, "Starting Integration Manager."](#) describes how to start Integration Manager, describes the Integration Manager main window, and introduces the menu commands and toolbar buttons.
- [Chapter 2, "Common terminology."](#) introduces the terminology used in Integration Manager.

Chapter 1: Starting Integration Manager

As soon as you have installed Integration Manager, you can begin using it. This chapter explains how to start Integration Manager and describes the components that make up the Integration Manager main window.

This chapter includes the following information:

- [Starting Integration Manager](#)
- [The Integration Manager toolbar](#)
- [Shortcut keys](#)
- [The Integration Manager menus](#)

Starting Integration Manager

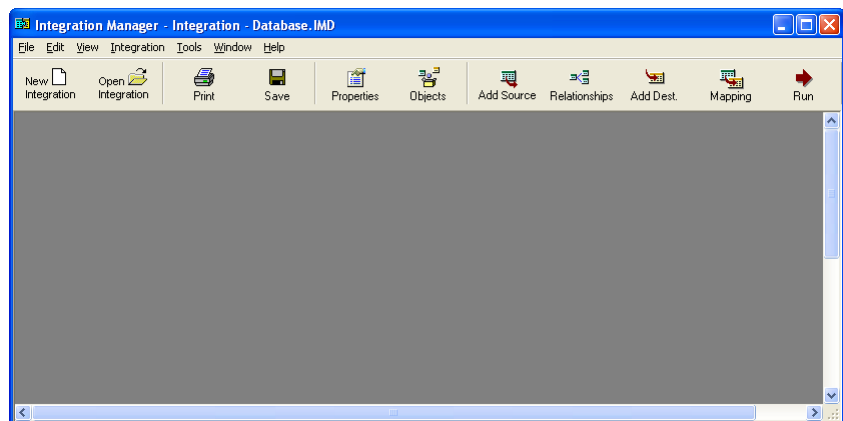
You can start Integration Manager from the **Start** menu or from within Microsoft Dynamics GP.

- From the task bar, choose **Start > All Programs > Microsoft Dynamics > Integration Manager > Integration Manager**.
- From within Microsoft Dynamics GP, choose **Tools > Integrate > Integration Manager**.



If you do not have a default Integration Manager database, the Select Database window opens. Use this window to select the database you want to open. You also can mark the Set as default database option.

The main Integration Manager workspace opens for the sample database. You can change the database from the sample database to your company database by selecting it from the **Tools > Options** menu in Integration Manager. Before you can use an existing database in Integration Manager 2013, you'll need to convert your database to version 2013. Refer to the Integration Manager User's Guide for more information.



The buttons in the window become available only after you choose to create a new integration or open an existing one.




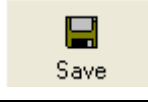
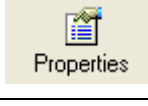

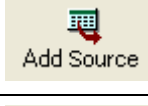
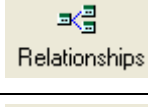
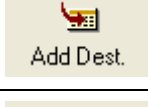
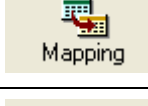

You perform all Integration Manager tasks in the main workspace. From this workspace, you can access the following:

Toolbar The Integration Manager toolbar consists of buttons for commonly used commands in Integration Manager.

Menus The menus include the commands available in Integration Manager.

The Integration Manager toolbar

The Integration Manager toolbar appears in the upper portion of the main window. Each button that appears on the toolbar represents an action you can perform in Integration Manager. The following table lists the buttons in the toolbar.

Button	Description
 New Integration	Creates a new integration.
 Open Integration	Opens an existing integration.
 Print	Prints information about the integration.
 Save	Saves the current integration.
 Properties	Displays the properties for an integration, source, or destination.
 Objects	Opens the Object Browser.
 Add Source	Opens the Add Source window, where you select a source for the current integration. The sources you can add depends on the adapters you have installed. If you do not have any adapters installed, you still can add an ODBC or text source.
 Relationships	Opens the Relationships window, where you create relationships between text or ODBC source queries.
 Add Dest.	Opens the Add Destination window, from which you select the destination for the current integration. The destination you can add depends on which adapters you have installed.
 Mapping	Opens the Integration Mapping window.
 Run	Runs the current integration.

Shortcut keys

Shortcut keys, also known as accelerator keys, are used with the CTRL key for menu commands that are used often. Not all menu commands have an accelerator key.

The following table contains a list of the shortcut keys for commonly used menu commands

Menu command		Shortcut key
File	Open Database	CTRL+D
	New Integration	CTRL+N
	Open Integration	CTRL+O
	Save Integration	CTRL+S
	Print	CTRL+P
View	Relationships	CTRL+L
Integration	Add Source	CTRL+A
	Add Destination	CTRL+D
	Mapping	CTRL+M
	Run	CTRL+R

The Integration Manager menus

The following table lists the commands that are available in Integration Manager. It also lists the access keys corresponding to the commands.

Menu commands		Description	Access key
File menu	New Integration	Creates a new integration.	ALT+F+N
	Open Integration	Opens an existing integration.	ALT+F+O
	Close Integration	Closes the current integration.	ALT+F+C
	New Integration Group	Creates a new integration group.	ALT+F+G
	Open Integration Group	Opens an existing integration group.	ALT+F+R
	Save Integration	Saves the current integration.	ALT+F+S
	Import Integrations	Imports integrations from other Integration Manager databases.	ALT+F+I
	Export Integrations	Exports integrations to existing Integration Manager database files. You also can create a new Integration Manager database file for the integrations you export.	ALT+F+E
	Print	Prints a report of the integration.	ALT+F+P
	Exit	Exits the current session of Integration Manager.	ALT+F+X
Edit menu	Remove Script	In the Integration Mapping window, removes the script associated with a field.	ALT+E+S
	Remove Translation	In the Integration Mapping window, removes the translation associated with a field.	ALT+E+T
View menu	Relationships	Opens the Relationships windows, in which you create the relationship between the text or ODBC source queries used for the current integration.	CTRL+L
	Properties	Displays the properties of the integration, selected source or destination.	
Integration menu	Add Source	Adds a source to the current integration.	ALT+H+A
	Add Destination	Adds a destination for the current integration.	ALT+H+D
	Remove	Removes the selected source or destination from the current integration.	
	Mapping	Opens the Integration Mapping window for the current integration.	ALT+H+M
	Source Settings	Opens the Source Settings window, allowing you to specify connection information for the source adapters that require these settings.	ALT+H+U
	Destination Settings	Opens the Destination Settings window, allowing you to specify connection information for destination adapters that require these settings.	ALT+H+S
	Run	Runs the current integration.	ALT+H+R
	Properties	Displays the properties of the integration.	ALT+H+E

Menu commands		Description	Access key
Tools menu	Object Browser	Opens the Object Browser window.	ALT+T+O
	Registration	Allows you to register Integration Manager.	ALT+T+R
	Options	Opens a window from which you can change options for Integration Manager, such as the location of the Integration Manager database or substitute pathname translations.	ALT+T+P
	Create database	Allows you to create a new database to use in Integration Manager.	
	Convert database	Allows you to convert your databases from previous versions of Integration Manager to use with the current version of Integration Manager.	
Window menu	Tile Horizontally	Lists all open windows and arranges them horizontally.	ALT+W+H
	Tile Vertically	Lists all open windows and arranges them vertically.	ALT+W+V
	Cascade	Displays all open windows in cascading order.	ALT+W+C
Help menu	Contents	Provides access to the online help for Integration Manager.	ALT+H+C
	Index	Contains help topics from the online help for Integration Manager.	ALT+H+I
	About This Window	Contains help information about the window displayed on the screen.	ALT+H+W
	About Integration Manager	Provides the version, location, and description of the installed version of Integration Manager and its adapters.	ALT+H+A

Chapter 2: Common terminology

Before you begin using Integration Manager, you should familiarize yourself with the terminology used throughout the product to have a better understanding of the integration process.

This chapter includes definitions for the following terms:

- [Source](#)
- [Source adapters](#)
- [Integration Manager engine](#)
- [Destination](#)
- [Destination adapters](#)
- [Destination mappings](#)
- [Query](#)
- [Query relationship](#)

Source

A source indicates where the information to be integrated comes from. In Integration Manager, a source can be anything from a comma- or tab-delimited file, to a database such as an Open Database Connectivity (ODBC) source. Sources exist independently of the source adapters. Refer to [Chapter 4, “Adding sources,”](#) for more information.

Source adapters

Source adapters connect to sources, and filter and extract data. The data is passed on to the Integration Manager engine for processing. This manual explains how to use an ODBC/text source.

Integration Manager engine

Working with the source adapter and destination adapter, the Integration Manager engine helps you map and integrate the source data into the destination.

Destination

A destination indicates where you want the processed information to be integrated. A destination can be an application or database. Destinations exist independently of the destination adapters. Microsoft Dynamics GP is an example of a destination.

Destination adapters

Destination adapters validate data before integrating it to the destination application, database, or file. If you do not have a destination adapter installed, you won't be able to select a destination. This manual explains how to integrate data from an ODBC/text source through the Microsoft Dynamics GP adapter into the Microsoft Dynamics GP general ledger.

Destination mappings

Destination mappings define how source data is mapped to the destination. Typically, the information comes from the source you specified, but it also can come from a constant value or default value in the destination. The integration mapping includes several rules you can use when creating a destination mapping.

Query

A query is a request for information. In Integration Manager, queries are used to refer specifically to requests for information from a text file or ODBC source. You can create several queries when using ODBC/Text as your source.

Query relationship

When you specify more than one ODBC/text source, you create several queries, as well. You need to create a query relationship between these queries. This relationship tells Integration Manager how the queries work together during the integration. For more information about creating query relationships, refer to [Chapter 5, "Creating query relationships."](#)

Part 2: Building integrations

This part of the manual describes how to build an integration. Each chapter contains a detailed step-by-step procedure that you can refer to later when creating your own integrations.



This manual uses the `GLHEADER.txt` and `GLLINE.txt` sample files. Before you begin, be sure these files exist in the `Samples` folder, usually `C:\Program Files\Microsoft Dynamics\Integration Manager\Samples`. If the `Samples` folder cannot be located at this location, browse to the location where `Integration Manager` was installed. If you still cannot find these files, contact your system administrator or Microsoft Dynamics GP Technical Support.

This manual is arranged in sequential order, so it's important that you go through the tasks in the order in which they are discussed.

The information is divided into the following chapters:

- [Chapter 3, "Creating integrations."](#) discusses integrations and how you create them.
- [Chapter 4, "Adding sources."](#) explains how to add sources, which retrieve information for the integration.
- [Chapter 5, "Creating query relationships."](#) describes why you need to create query relationships and how to create them.
- [Chapter 6, "Adding a destination."](#) explains how to select the destination for the integration.
- [Chapter 7, "Mapping source data to the destination."](#) describes how to map the source data to the destination.

Chapter 3: Creating integrations

When you create an integration, you'll define properties for the integration such as a name and description, and how many errors and warnings are allowed. The integration is the primary object that manages all the components necessary to integrate data into a specified destination.

This chapter includes the following information:

- [Creating a new integration](#)

Creating a new integration

You can create new integrations or modify existing integrations. This information describes the steps you'll take to create a new general ledger integration. For information about modifying integrations, see the Integration Manager User's Guide.

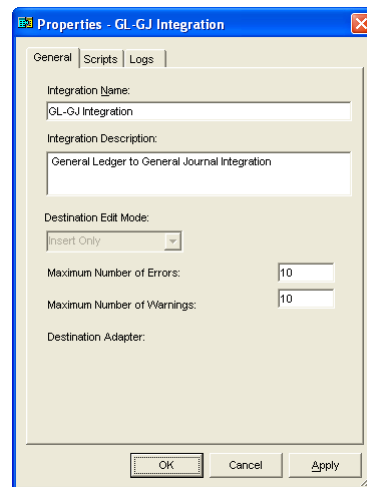
To create a new integration:

1. Start Integration Manager.
2. From the **File** menu, choose **New Integration**.

– or –

On the **Integration Manager** toolbar, choose **New Integration**.

The Integration window opens, and then the Properties window opens.



3. Enter an integration name.

For this tutorial, use **GL-GJ Integration**, which stands for General Ledger to General Journal Integration.

For your own integrations, use any name that helps you identify the integration easily.

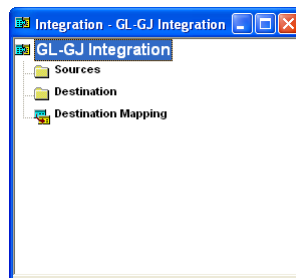
4. Enter an integration description, such as **General Ledger to General Journal Integration**.



For your own integrations, describe them so you can easily recognize each integration. For example, you might enter the source of the data and its destination or a date.

5. Click **OK** to close the Properties window.

The name of your integration now appears in the Integration window.



6. From the **File** menu, choose **Save Integration**.



You should save the integration immediately after you create it, as well as whenever you make any changes to it.

Now, you can add sources to the integration. Refer to [Chapter 4, "Adding sources,"](#) for more information.

Chapter 4: Adding sources

This chapter describes how to add sources to your integration, specifically, sources that query text files. Before you complete the tasks in this chapter, you must already have created an integration using the procedure discussed in [Creating a new integration](#) on page 19.

This chapter includes the following information:

- [Understanding sources](#)
- [Removing duplicate sources](#)
- [Understanding the source files](#)
- [Creating the GL Header query](#)
- [Previewing source data](#)
- [Creating the GL Line query](#)

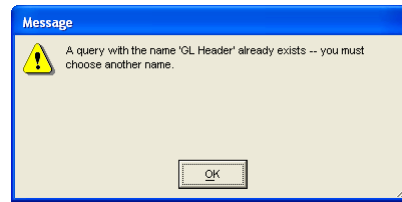
Understanding sources

A source indicates where the requested information you are integrating originates. In Integration Manager, a source can be a comma- or tab-delimited file, or a database such as an ODBC source. Sources exist independently of the source adapters; however, the sources you can add to your integration depend on the source adapters you have installed. For more information about using the source adapters you have installed, refer to the Integration Manager User's Guide.

The following table shows several available source adapters and the supported functionality. The information in the table isn't exhaustive but is meant to show Integration Manager's ability to support different source adapters.

Source adapter	Supported functionality	Remarks
ODBC/Text	Extracts data from ODBC/Text sources.	This adapter is always installed with Integration Manager. Integration Manager supports three types of ODBC/Text Sources: Text, Simple ODBC, and Advanced ODBC. Text sources retrieve data from text files. Simple ODBC sources retrieve data from an ODBC data source. Advanced ODBC sources issue SQL statements to retrieve information from an ODBC data source.
XML Source Adapter	Extracts data from XML files.	Using this adapter, you can use Integration Manager to create integrations that use XML files as source data and move them into applications that may not support XML.

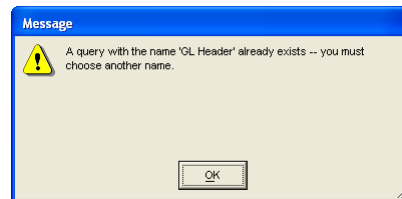
If someone on your team already has worked through this Quick Start guide, a message similar to the following might be displayed when you add your sources.



To resolve this issue, you can use different names for the sources, or you can remove the sources that were previously created. Refer to [Removing duplicate sources](#) for more information.

Removing duplicate sources

If someone on your team already has worked through this Quick Start guide, a message similar to the following might be displayed when you add your sources.



To resolve this issue, you can use different names for the sources, or you can remove the sources that were previously created.

Use the following procedure to remove a duplicate source.

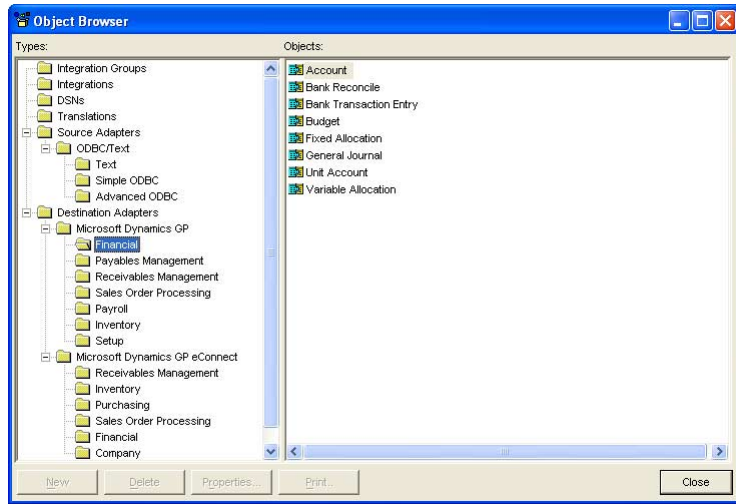
To remove duplicate sources:

1. On the toolbar, choose **Objects**.

– or –

On the **Tools** menu, choose **Object Browser**.

The Object Browser window opens.



2. In the **Types** pane, expand **Source Adapters** and then expand **ODBC/Text**. Select **Text**.
3. In the **Objects** pane, select **GL Line** and choose **Delete**.
4. When the confirmation message appears, asking if you want to delete the selected item, choose **Yes**.

Repeat steps 3 and 4 for **GL Header**, and then close the Object Browser window.

Understanding the source files

The integration in this guide, the GL-GJ Integration, involves importing two transactions into the general ledger. The information for these transactions is found in two files, GLHEADER.txt and GLLINE.txt. These files are located in the Samples directory where you installed Integration Manager. The following illustrations show how the files appear in a text editor.

The first line contains column names.

Tab characters separate the items in each line.

The first line contains column names.

Tab characters separate the items in each line.



If you are not using the Microsoft Dynamics GP sam[e] company, or if your account format structure does not match the account structure in the sample files, the integration cannot successfully be completed. You can modify the structure in the text files by opening these files in a text editor, such as Notepad.

The two text files actually contain the same information as the following two transactions.

This information is contained in the GLHEADER.txt file.

Document:	100
Reference:	Project 2a
Date:	7/24/04

This information is contained in the GLLINE.txt file.

<u>Account Number</u>	<u>Debit</u>	<u>Credit</u>
000-1100-00		1000.00
000-1130-00	800.00	
000-1140-00	200.00	

This information is contained in the GLHEADER.txt file.

Document:	200
Reference:	Project 2b
Date:	7/25/04

This information is contained in the GLLINE.txt file.

<u>Account Number</u>	<u>Debit</u>	<u>Credit</u>
000-1300-01	500.00	
000-1310-01		500.00

The header information for both transactions is contained in the GLHEADER.txt file, and that the line items for both transactions are contained in the GLLINE.txt file.

You will create the following two queries that retrieve the information from these two text files.

GL Header Query This query retrieves data from the GLHEADER.txt file.

GL Line Query This query retrieves data from the GLLINE.txt file.

Refer to [Chapter 5, “Creating query relationships.”](#) for information about how to create a relationship between the two queries that “reassembles” the information back into complete transactions. The complete transactions then can be read by Integration Manager.

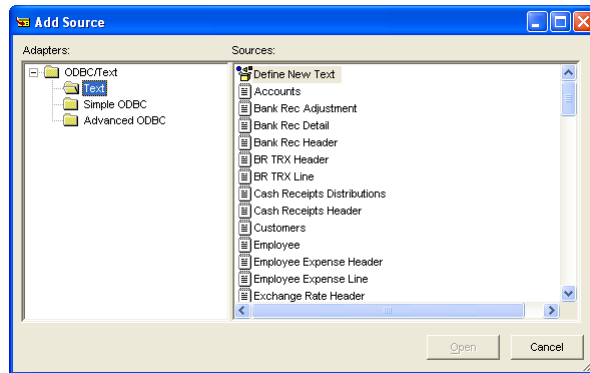
Creating the GL Header query

This information describes how to add a text source that queries the data in the GLHEADER.txt file.

To create the GL Header query:

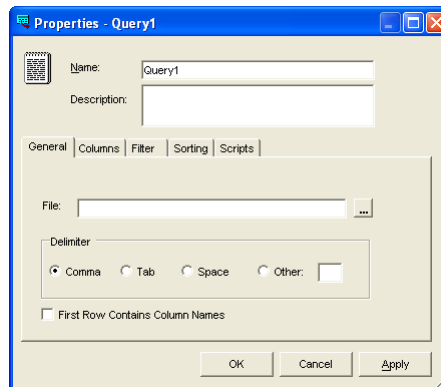
1. Open the GL-GJ Integration if it is not already open.

2. In the Integration window, right-click **Sources**, and choose **Add Source**. The Add Source window appears.



3. In the **Adapters** pane, expand **ODBC/Text**.
4. Select **Text**.
5. In the **Sources** pane, select **Define New Text** and choose **Open**.

The Properties window for the text query opens.



- Enter a name and description for the source.

Name	GL Header
Description	GL Header Query

The name should describe the type of information retrieved by the source.

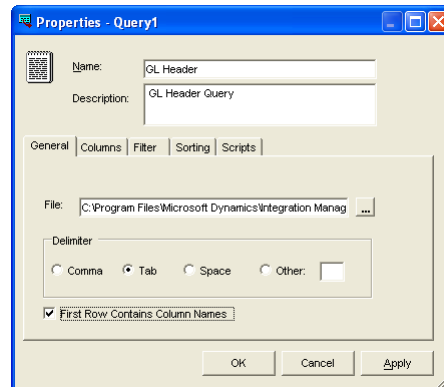
The description should describe the type of data contained in the source. It must be descriptive enough so other Integration Manager users can easily identify and use it.

- Choose the **General** tab to define the general properties for the query.
 - Select the source file to use for the query by clicking the lookup button on the right side of the **File** field.

Browse to the Samples location where the GLHEADER.txt file is located, usually C:\Program Files\Microsoft Dynamics\Integration Manager\Samples. Select GLHEADER.txt and choose **Open**. The path and file name appear in the **File** field.

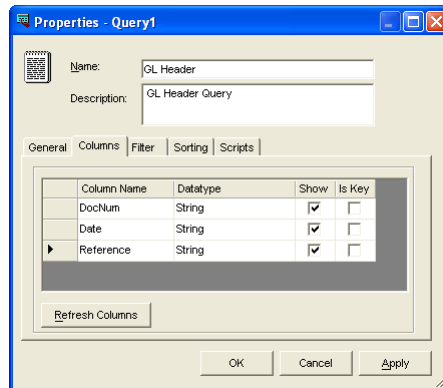
- For Delimiter, select **Tab**, because the items in the GLHEADER.txt file are separated (delimited) by characters.
- Select **First Row Contains Column Names**. When you select this option, Integration Manager uses the names in the text file when referring to the columns.

When you have finished, the window should look like the following illustration.



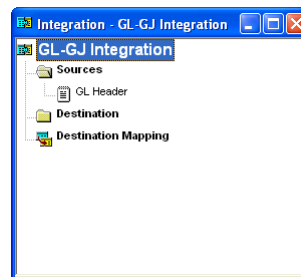
- Choose the **Columns** tab to view columns from the text file.

If you specified the general properties correctly, the **Columns** tab displays three items under **Column Name**, as shown in the following illustration.



If three items are not listed in the **Column Name** list, return to the **General** tab and verify that you have specified the appropriate values. Then return to the **Columns** tab and choose **Refresh Columns**.

9. Choose **OK** to close the Properties window. The source is added to the integration, as shown in the following illustration.



10. On the toolbar, choose **Save** to save the integration.

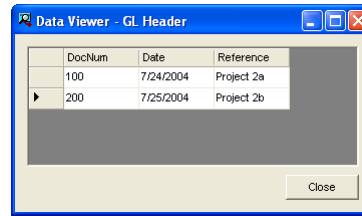
Previewing source data

After you've created the query, you should preview the source to verify that the correct data is being returned.

To preview source data:

1. In the Integration window, right-click the new source.
2. On the **Shortcut** menu, choose **Preview <GL Header>**.

The Data Viewer window opens.



The illustration shows the Data Viewer window with the values returned by the query. These values should look just like those in the GLHEADER.txt file.

3. Choose **Close** when you have finished viewing the query results.

Creating the GL Line query

After you have added one source that queries a text file (GLHEADER.txt), you'll add the second source that queries the GLLINE file and then preview it.

To create the GL Line query:

1. Open the GL-GJ Integration if it is not already open.
2. In the Integration window, right-click **Sources** and choose **Add Source**. The Add Source window appears.
3. In the **Adapters** pane, expand **ODBC/Text**. Select **Text**.
4. In the **Sources** pane, select **Define New Text** and choose **Open**.

The Properties window for the text query opens.

5. Enter a name and description for the source.

Name	GL Line
Description	GL Line Query

6. Specify the properties on the **General** tab.

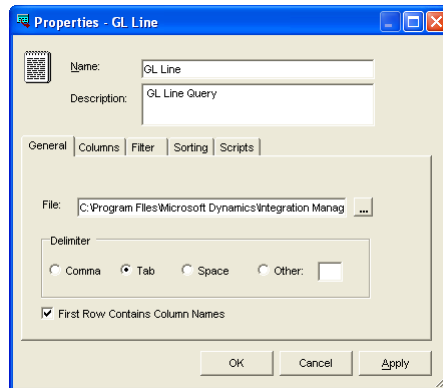
On the **General** tab:

- Select the source file to use for the query by clicking the lookup button on the right side of the **File** field.

Browse to the Samples location where the GLLINE.txt file is located, usually C:\Program Files\Microsoft Dynamics\Integration Manager\Samples. Select GLLINE.txt and choose **Open**. The path and file name appears in the **File** field.

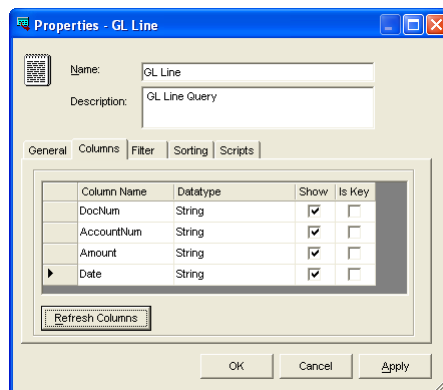
- For **Delimiter**, select **Tab**, because the items in the GLLINE.txt file are separated (delimited) by characters.
- Select **First Row Contains Column Names**. When you select this option, Integration Manager uses the names in the text file when referring to the columns.

When you have finished entering information, the window should look like the following illustration.



7. Choose the **Columns** tab to view the columns from the text file.

If you specified the general properties correctly, the **Columns** tab displays four items under **Column Name**, as shown in the following illustration.



*If four items are not listed in the **Column Name** list, return to the **General** tab and verify that you have specified the appropriate values. Then return to the **Columns** tab and choose **Refresh Columns**.*

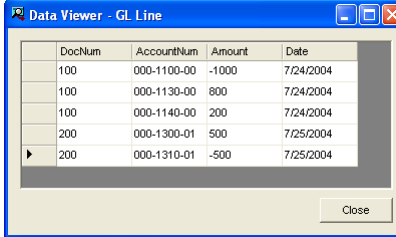
8. Choose **OK** to close the Properties window. The source is added to the integration.
9. On the toolbar, choose **Save** to save the integration.



A message appears, explaining that you need to create query relationships. You will create query relationships in [Chapter 5, "Creating query relationships,"](#) so you can ignore this message for now.

10. Preview the source following the instructions in [Previewing source data](#) on page 27.

The Data Viewer window shows the values returned by the query you have just created.



The screenshot shows a window titled "Data Viewer - GL Line" with a table containing the following data:

DocNum	AccountNum	Amount	Date
100	000-1100-00	-1000	7/24/2004
100	000-1130-00	800	7/24/2004
100	000-1140-00	200	7/24/2004
200	000-1300-01	500	7/25/2004
200	000-1310-01	-500	7/25/2004

11. Close the Data Viewer window and save the integration.

Chapter 5: Creating query relationships

When you add more than one source that queries text files or ODBC sources, you need to create relationships between the sources. Relationships tell Integration Manager how sources work together to retrieve information for the integration. In this chapter, you'll create a relationship between the two text sources you added to the GL-GJ Integration.

This chapter includes the following information:

- [Creating relationships](#)

Creating relationships

The GL-GJ Integration uses two text sources, so you need to define a query relationship. The query relationship you'll create in this example will link the GL Header query to the GL Line query.

To create a query relationship:

1. Open the GL-GJ Integration.
2. On the **View** menu, choose **Relationships**.

– or –

In the Integration window, double-click **Query Relationships**.

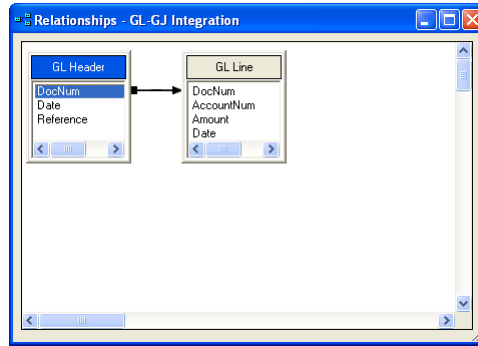
The Relationships window opens, showing you the GL Header query, which retrieves information from the GLHEADER.txt file, and the GL Line query, which retrieves information from the GLLINE.txt file.



3. Draw a line between the corresponding columns in the two queries to define the relationship.

In the **GL Header** window (the master query), click and drag from **DocNum** to **DocNum** in the **GL Line** window. Release the mouse button when the text icon

appears on your mouse pointer. A line appears that connects these two queries, indicating that the relationship has been created.



The GL Header query is considered the master, and the GL Line query is the child. Each time Integration Manager reads a row from the GL Header query, it should read the corresponding line items from the GL Line query. For example, when Integration Manager reads the DocNum row in the GL Header query, it also reads the DocNum row in the GL Line query.

4. Choose **Close** to close the Relationships window.



All relationships you create are verified. If problems exist, an error message appears. If an error appears, open the Relationships window and correct the problem.

Chapter 6: Adding a destination

This chapter describes how to add a destination to your integration—specifically, a Microsoft Dynamics GP destination, General Ledger. You can add a destination at any time when you build an integration, but you might want to add it after you add the source so that you’ve had a chance to become more familiar with the source data.

This chapter includes the following information:

- [Understanding destinations](#)
- [Adding the Microsoft Dynamics GP destination](#)

Understanding destinations

Destinations define where you want the source data to be integrated. They can be other applications, a database, or an XML file. Which destinations you can add to your integration depends on which destination adapters you have installed.

For more information about using the destination adapters you have installed, refer to the Integration Manager User’s Guide.

The following table describes several destination adapters. The information in the table isn’t exhaustive. Instead, it is meant to show Integration Manager’s ability to support different destinations.

Destination adapter	Supported functionality	Remarks
Microsoft Dynamics GP destination adapter	Integrates data into Microsoft Dynamics GP destinations using Microsoft Dynamics GP	This adapter includes the following predefined destinations: Financial, Payables Management, Receivables Management, Sales Order Processing, Payroll, Inventory, and Setup.
Microsoft Dynamics GP eConnect destination adapter	Integrates data into Microsoft Dynamics GP destinations using Microsoft Dynamics GP eConnect	This adapter includes the following predefined destinations: Customer, Inventory Transaction, Inventory Item, Purchasing Order Entry, Receivings Transaction Entry, Sales Transaction, GL Account, GL Transaction, and Shipping Method.

Adding the Microsoft Dynamics GP destination

This information explains how to add the Microsoft Dynamics GP General Ledger destination to your integration.

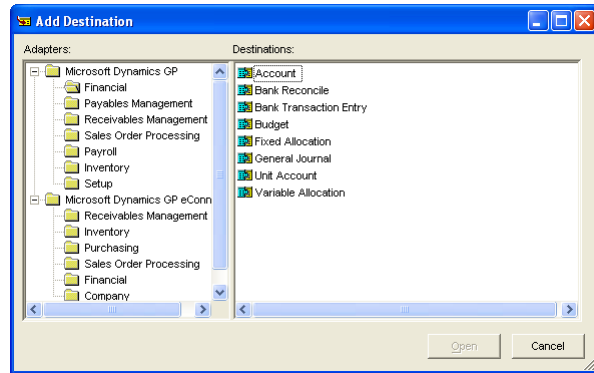
To add the Microsoft Dynamics GP destination:

1. Open the GL-GJ Integration.
2. On the **Integration** menu, choose **Add Destination**.

– or –

Right-click **Destination** in the Integration window, and from the menu that appears, choose **Add Destination**.

The Add Destination window opens.



3. Expand the **Microsoft Dynamics GP** folder and choose **Financial**.
4. In the **Destinations** pane, select **General Journal** and choose **Open**.

The General Journal is added as the destination of the integration, as shown in the following illustration.



5. On the **File** menu, choose **Save Integration** to save the integration.

Chapter 7: Mapping source data to the destination

Before completing the tasks presented in this chapter, be sure that you have created the queries for the integration, set up the relationship between the two queries, and selected General Journal as the integration destination. These tasks are described in the preceding chapters.

This chapter includes the following information:

- [Using the Integration Mapping window](#)
- [Mapping fields](#)
- [Mapping line items for the transaction](#)
- [Setting options for the General Journal destination](#)

Using the Integration Mapping window

Destination mappings describe how Integration Manager should map source data to the appropriate fields in the destination. Although many values come from the source, values also can come from constant values or default values and are defined in the Integration Mapping window.

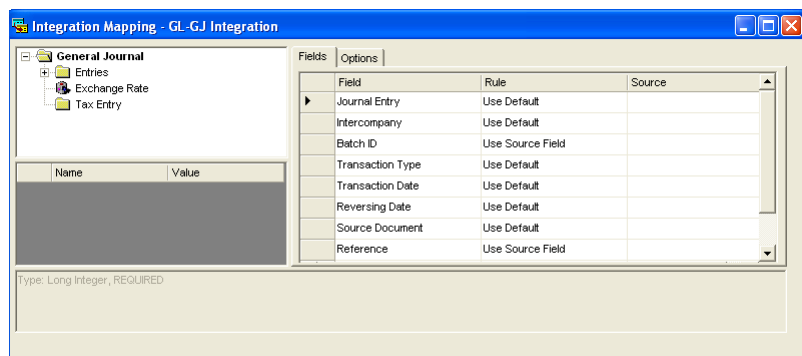
To use the Integration Mapping window:

1. Open the GL-GJ Integration.
2. On the **Integration** menu, choose **Mapping**.

– or –

In the Integration window, double-click **Destination Mapping**.

The Integration Mapping window opens.



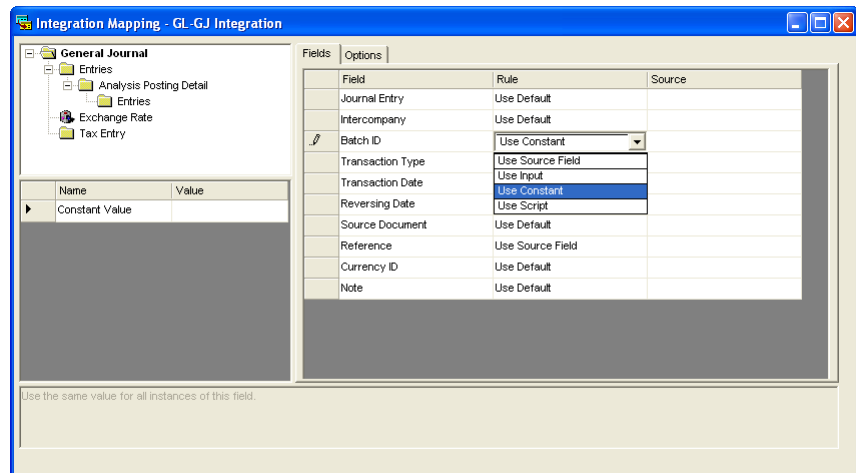
A mapping is composed of rules, which define where the information for an item in the destination originates. Several rules are available in Integration Manager. For more information on rules, refer to the Integration Manager User's Guide.

Mapping fields

Based on the destination you select, Integration Manager maps and sets rules for several fields, which you can change. In this information, you will map the fields in the root recordset labeled General Journal. Specifically, you will change the rules for and mapping of the **Batch ID**, **Reference**, and **Transaction** fields.

To map the fields:

1. In the Integration Mapping window, click in the **Rule** column for the **Batch ID** field. Click the drop-down arrow. From the list that appears, choose **Use Constant**.



Each transaction integrated into the destination is assigned to the batch indicated by the value in the **Batch ID** field. For the GL-GJ Integration, a constant value is being used for the batch ID.

2. To set the constant value for the **Batch ID** field, click in the **Source** column and enter **SAMPLE BATCH** (in uppercase characters).

– or –

In the **Rule Properties** section of the window, click in the **Value** column for **Constant Value** and enter **SAMPLE BATCH** (in uppercase characters).



*For the **Reference** field, note that Integration Manager sets the rule to **Use Source Field**. This rule indicates that the information comes from one of the text source files for the integration. This rule is appropriate for this example, so do not change it.*

3. To map the **Reference** field, click in the **Source** column. A lookup button appears. Click that button to open the Source Object window.



*If the button does not appear, click in another field and then click in the **Source** column for the **Reference** field again.*

4. In the Source Object window, select the **GL Header** source from the list. Select **Reference**, and then choose **Select**.

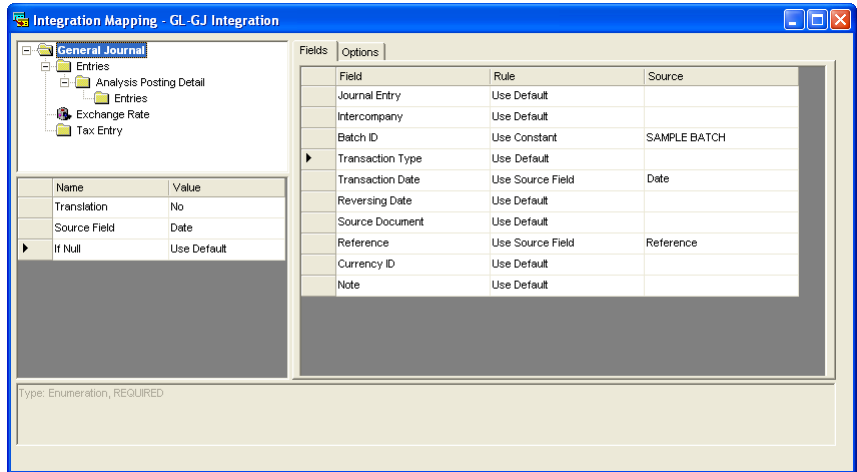
In the Integration Mapping window, “Reference” appears in the **Source** column.

5. Set the rule for **Transaction Date** to **Use Source Field**, and then click the lookup button in the **Source** column.
6. Because the value for **Transaction Date** will come from the **Date** field in the GL Header source file, make the following selections in the Source Object window:

Source	GL Header
Column	Date

7. Choose **Select**.

The Integration Mapping window should look like the following.

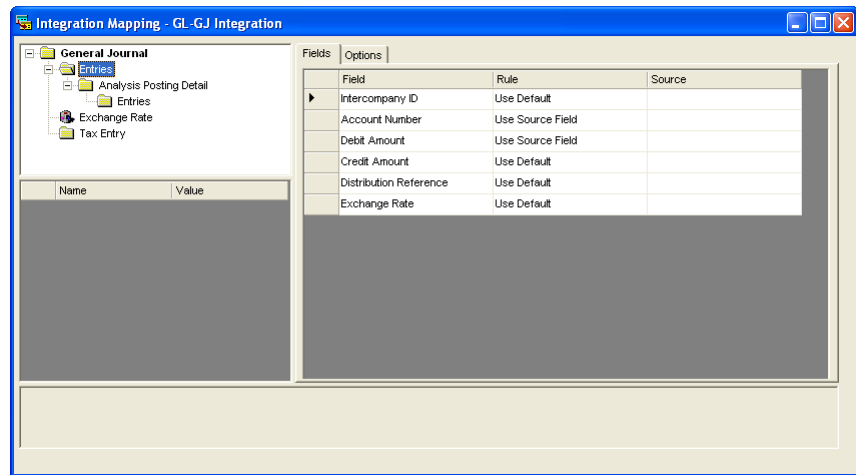


Mapping line items for the transaction

In the upper-left pane of the Integration Mapping window, the child recordsets sit below the root recordset, which is General Journal for this integration. To map the fields in the child recordsets, select the appropriate child recordset in this pane; the fields for the recordset appear to the right. For this task, you will map the line items that are part of the **Entries** child recordset.

To map the line items for the transaction:

1. Select **Entries** in the upper-left pane of the Integration Mapping window. The fields for this recordset appear.



2. For the **Account Number** field, be sure the rule is set to **Use Source Field**. Click in the **Source** column, then click the lookup button.

The Source Object window opens.

3. Make the following selections:

Query	GL Line
Column	Account Num



*In order for the lookup button to appear, you may need to click in the **Rule** column and then in the **Source** column.*

4. Choose **Select**.

The line items for the GL-GJ Integration contain only one amount per line. Some of the transaction amounts are positive, while others are negative. Positive values are intended to be debit values, while negative values are intended to be credit values.

Each entry in Integration Manager requires a debit entry and a credit entry. Integration Manager is capable of using a single value for both fields by using two special rules: **Use Positive Source Field** and **Use Negative Source Field**.

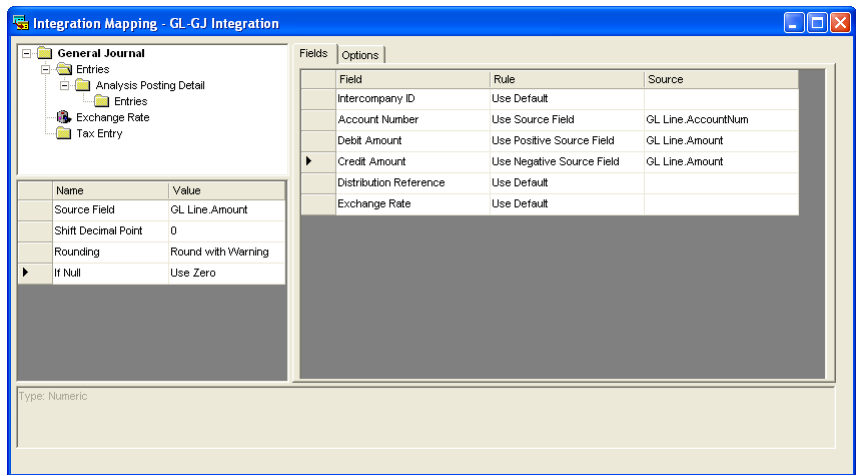
5. For the **Debit Amount** field, set the rule to **Use Positive Source Field**. This means positive values are imported as they are, while any negative values are imported with a value of zero.
6. For the **Debit Amount** field, click the lookup button in the **Source** column to display the Source Object window. Make the following selections, and then choose **Select**.

Query	GL Line
Column	Amount

7. For the **Credit Amount** field, set the **Rule** column to **Use Negative Source Field**. This means that you are importing negative values which are designated as a corresponding credit amount.
8. For the **Credit Amount** field, click the lookup button in the **Source** column to display the Source Object window. Make the following selections, and then choose **Select** and **Close**.

Query	GL Line
Column	Amount

The Integration Mapping window should now look similar to the following.

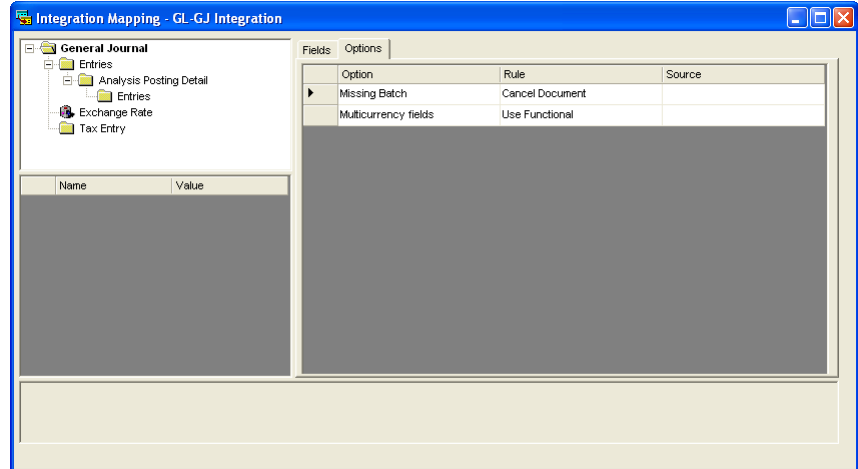


Setting options for the General Journal destination

At the beginning of this lesson, you specified that a constant value is used as the batch ID for this set of transactions. Now you need to create the batch. A special option for the General Journal destination allows you to do this.

To set options for the General Journal destination:

1. In the Integration Mapping window, select the **General Journal** item in the upper-left pane of the window.
2. Choose the **Options** tab.



3. Set the rule for the **Missing Batch** option to **Add New Batch**.

The new batch is created based on the value you supplied for the **Batch ID** field on the **Fields** tab.

4. Close the Integration Mapping window.
5. On the **File** menu, choose **Save Integration** to save the integration.

Part 3: Running an integration

This part of the manual describes how to run an integration, and how to verify the results. Each chapter contains a step-by-step procedure that you can refer to later when creating your own integrations.

The information is divided into the following chapters:

- [Chapter 8, “Running the integration,”](#) describes how to run an integration after it has been created.
- [Chapter 9, “Verifying the results,”](#) explains how to verify the results of the GL-GJ Integration after running it.

Chapter 8: Running the integration

This chapter describes how to run the GL-GJ Integration you created, and discusses the information you should be aware of before running an integration.

This chapter includes the following information:

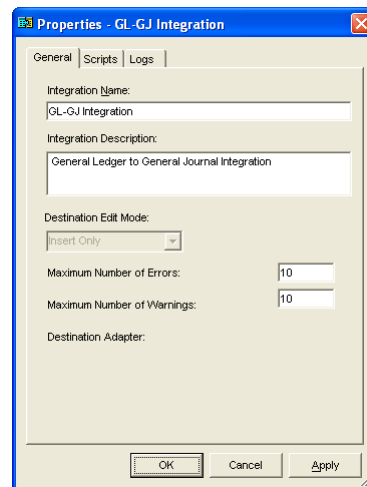
- [Preparing to run the integration](#)
- [Running the integration](#)

Preparing to run the integration

Before running the GL-GJ Integration, you must specify the remaining integration properties. You can open the Properties window for an integration by double-clicking on the integration.

To prepare to run the Integration:

1. Open the GL-GJ Integration, if it is not already open.
2. Open the Properties window for the integration. Choose **Integration > GL-GJ Integration Properties** or right-click the integration and choose **GL-GJ Integration Properties**.



3. In the **Destination Edit Mode** field, select **Insert Only**.



Insert Only is the only option available for Journal and Transaction destinations.

The destination edit mode indicates how the source data will be integrated into the destination. The modes you can select depend on the destination. When you first create an integration, the only available destination edit mode is **Insert Only**, which is the default value.

The following table describes the destination edit modes.

Mode	Description
Insert Only	Creates only new records during the integration. Existing records cannot be updated.
Update Only	Updates existing records during the integration. New records cannot be created.
Insert and Update	Creates new records and updates existing records during the integration.

- Enter **10** in both the **Maximum Number of Errors** and **Maximum Number of Warnings** fields.

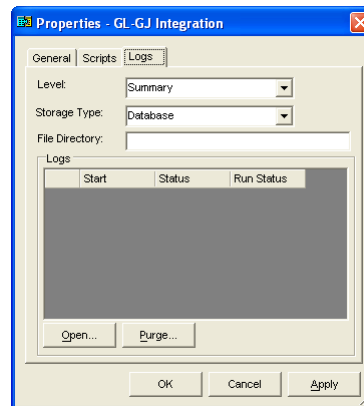
These settings represent the maximum number of errors and warnings that occur before an integration is automatically stopped.

When an error occurs, typically because of a condition in the data that's not valid, the document fails to integrate. When a warning occurs, the document does integrate, but Integration Manager provides information about the problem so you can resolve it.



*Although this integration doesn't use them, you can add Microsoft Visual Basic® Scripting Edition (VBScript) scripts to an integration using the **Scripts** tab. The scripts are executed at various points during the integration. For more information about adding scripts, refer to the Integration Manager User's Guide.*

- Choose the **Logs** tab to specify the level of detail to be shown for the log and the location of the log files created by Integration Manager.



Logs can be stored either in a text file or in the same Microsoft Access® database file that stores integrations. Storing the log in the Access database file allows it to be available to all users of Integration Manager in a network environment. See the Integration Manager User's Guide for more information about removing log files and compacting the database.

If you store the log in a text file, you need to specify the directory that will contain the log. By default, text file logs are stored in the Logs directory located where you installed Integration Manager.

- Choose **OK** to save the log properties and close the window.

For more information on logs, refer to the Integration Manager User's Guide.

7. Choose **File > Save Integration** to save the integration.

Running the integration

After you have made final specifications for the integration, you are ready to run the integration. When you run the integration, your data is integrated from the source to the destination specified in the integration.



To be sure that users have the correct permissions to run an integration, you must use the appropriate user privileges when you run the integration for the first time. Typically, this means being part of the Administrators group or the Power Users group on Windows® XP. On Windows Vista®, Windows 7, or Windows Server® 2008, it means running the integration with administrative privileges. For example, you can run the integration from the shortcut on the **Start** menu, select **Microsoft Dynamics > Integration Manager** and right-click **Run Integration**, and then select **Run as Administrator**. Refer to your operating system's documentation for more information. When you run as an administrator, the registry and other settings are updated so other users can run integrations without permission issues.

To run the integration:

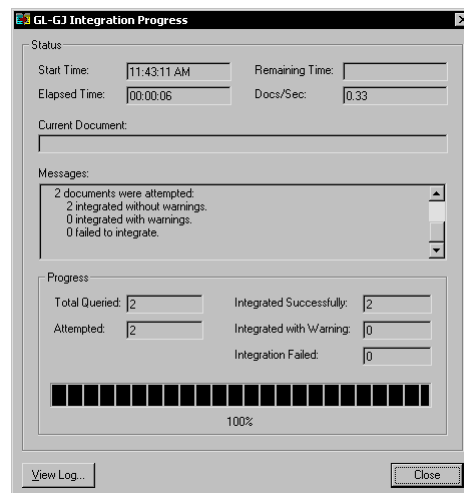
1. Because you are using the Microsoft Dynamics GP adapter, you must open the Microsoft Dynamics GP application.
2. Start Integration Manager and open the GL-GJ Integration.



Running an integration requires that Integration Manager is registered. If you do not have registration keys, you cannot run an integration. To register Integration Manager, see the Integration Manager User's Guide.

3. On the **Integration** menu, choose **Run**.

The integration begins, and the Progress window opens. This window indicates progress as items are read by the integration.



If you set up the integration properly, two documents should be queried and successfully imported with no warnings or errors.

If there are any errors or warnings, check the following items:

- Be sure the queries are set up and are returning the proper data.
- Verify that the query relationship is set up correctly.
- Check the destination mapping to be sure you have mapped all of the fields correctly.

4. Choose **Close** to close the Progress window.

Chapter 9: Verifying the results

After you have completed the GL-GJ Integration and it has run successfully without any errors or warnings, you can verify whether the data being returned is valid. This chapter shows you how to verify the results of the GL-GJ Integration.

This chapter includes the following information:

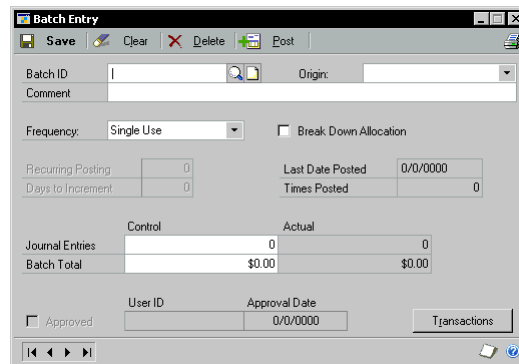
- [Verifying the integration results](#)
- [What to do next](#)

Verifying the integration results

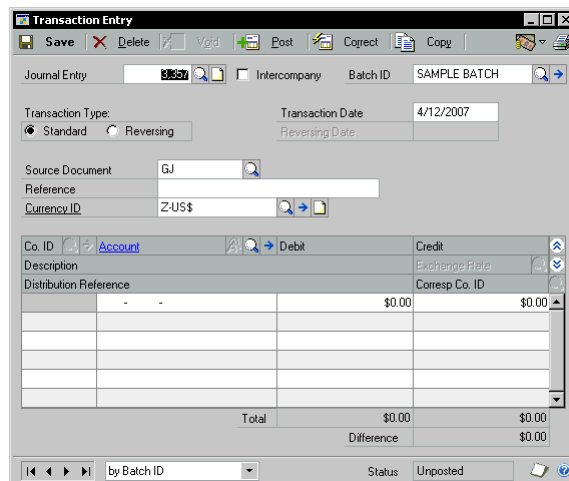
You can verify the results of the integration in Microsoft Dynamics GP.

To verify the integration results:

1. Open Microsoft Dynamics GP.
2. Choose **Financial > Transactions > Batches** to open the Batch Entry window.



3. Click the **Batch ID** lookup button and select the batch called **SAMPLE BATCH**.
4. Choose **Transactions** to display the transactions that are part of the new batch.



- Click the previous record browse button twice to navigate to the first record in the batch.

This should be the first record that was imported by Integration Manager.

Co. ID	Account	Description	Debit	Credit	Exchange Rate	Corresp Co. ID
TWD	000 -1100 -00		\$0.00	\$1,000.00		
TWD	000 -1130 -00		\$800.00	\$0.00		
TWD	000 -1140 -00		\$200.00	\$0.00		
			\$0.00	\$0.00		
Total			\$1,000.00	\$1,000.00		
			Difference	\$0.00		

The **Batch ID**, **Transaction Date**, and **Reference** fields, and all the line items, should match the first sample transaction. Refer to [Understanding the source files](#) on page 23.

- Click the next record browse button to display the next record in the batch.

This record should match the second sample transaction. If both records match, you have successfully completed the GL-GJ Integration.

What to do next

Now that you are familiar with the basics of Integration Manager, you can begin creating your own integrations. For more information about how to use Integration Manager, refer to the Integration Manager User's Guide. You also can refer to the Integration Manager online help for descriptions of each window.

To continue learning Integration Manager using samples, you can use the sample files usually located in C:\Program Files\Microsoft Dynamics\Integration Manager\Samples.



The steps you take using the samples may be different from the steps in this manual.

Glossary

Adapter

An Integration Manager component that connects to a destination or source application or other data source.

Advanced ODBC query

A query that issues a SQL statement to retrieve information from an ODBC data source. *See also* [Simple ODBC query](#).

Boolean

The logical value true or false.

Comma-delimited file

A text file that uses commas to separate the individual data items in the text file.

Collections

See [Recordset](#).

CSV file

An acronym for Comma-Separated Values. It indicates a text file that uses commas to separate the individual data items.

Currency

A data type that is intended to hold monetary values. It can have up to four decimal places and must be in the range –922,337,203,685,477.5808 to 922,337,203,685,477.5807.

Data source

An open database communications (ODBC) data source from which you want to retrieve data.

Data type

A data source setting that indicates what type of data is contained in the column of a data source. Common data types include booleans, currencies, integers and strings.

Delimiter

A character or characters that separate the individual data items in a text file. Commas and tab characters are often used as delimiters.

Destination

Where data gathered by Integration Manager is placed in Microsoft Dynamics GP. Integration Manager provides several common destinations, such as customer information or receivables transactions.

Destination adapter

A feature that validates data before integrating it to the destination application or database such as Microsoft Dynamics GP.

Destination mapping

Where information for each item in the integration destination originate. For many items in the destination, the destination mapping indicates that information originates from a query. For other items, the mapping indicates that a constant value or a default value from Microsoft Dynamics GP should be used.

Document definition

The metadata that Integration Manager uses to describe the structure and content of a source or destination. It describes recordsets, hierarchical relationships, fields, data types, field lengths, and more. It is analogous to an XML schema, but it usually contains more information than an XML schema.

Double

A data type that stores a double-precision floating point number. The value can have up to fifteen significant digits.

Negative values must be in the range –1.79769313486232E308 to –4.94065645841247E–324.

Positive values must be in the range 4.94065645841247E–324 to 1.79769313486232E308.

eConnect destination adapter

An Integration Manager destination adapter that enables integration with Microsoft Dynamics GP data using eConnect.

Enumeration

A data type that is restricted to a fixed set of named values. Enumeration fields in a destination correspond to list boxes, drop-down lists and other list controls in Microsoft Dynamics GP. When you set the value of an enumeration field, you supply the integer value that corresponds to one of the items in the enumeration. *See also* [Translation](#).

Filter

Specifies the criteria for determining precisely which documents you want to extract from the source. You can define filters only for those fields located in the Root Recordset.

Import command

A command that approximates the structure of an XML source that you select and converts it into recordsets and fields—a structure Integration Manager can use.

Integer

A data type that stores integral numeric values. It must be in the range –32,768 to 32,767.

Integration group

A set of integrations that are performed in succession in a specified order.

Integration Manager engine

An Integration Manager component that receives data from the source adapter, provides mapping and transformation functionality, and passes data to a destination adapter.

Join

A database operation that combines some or all records from two or more tables.

Long integer

A data type that stores integral numeric values. It must be in the range –2,147,483,648 to 2,147,483,647.

LongVarChar

A data type that stores a sequence of up to 65,535 characters.

Mixed element

Those elements that contain child elements to attributes as well as data.

Null

A keyword that indicates a field or variable does not contain valid data.

Numeric

A data type specific to Integration Manager. It stores decimal values that can have up to 19 digits with up to 5 of the digits after the decimal point.

Query

A request for information. In Integration Manager, a query can request information from text files or from ODBC data sources.

Query builder

A tool in Integration Manager to aid writing a SQL statement to use for an advanced ODBC query.

Query relationship

A relationship between two queries that defines how they work together to retrieve information.

Recordset

An element that is used to map items in an integration destination. There are two types of recordsets. One type of recordset simply groups related fields in the destination. The other type of recordset indicates that several sets of fields in the recordset can be associated with a single instance of a record imported into the destination. These recordsets are represented by the folder icon.

Rejection file

A text file that contains records that were rejected from text queries by Integration Manager. Rejection files have the .rjt extension.

Restriction

A set of criteria that allows you to specify the rows that will be included in a query. All rows that do not fit the criteria are excluded.

Rule

Defines where the information for an item in the destination mapping originate.

Simple ODBC query

A query that retrieves data from an ODBC data source. *See also* [Adapter](#).

Single

A data type that stores a single-precision floating point number. The value can have up to seven significant digits.

Negative values must be in the range -3.402823E38 to -1.401298E-45.

Positive values must be in the range 1.401298E-45 to 3.402823E38.

Source

Indicates where the data to be integrated comes from. A source can either be a text file, a database, or an application

Source adapter

A feature that connects to a database, text file or application source. It filters and extracts the data from the source before passing the information to the Integration Manager engine.

Source data

Shows data from the source one document at a time and in the structure of the document definition.

Source name

The name of the source document definition that you are setting up. This name appears in the Add Source window. You may use any name that helps you easily identify this source document definition.

Source settings

Source settings connect the source document definition to an actual source by having you specify certain parameters. They are additional properties relating to a source and are associated with an individual integration. They are not, however, automatically inherited by other integrations that use the same source document definition.

String

A data type that stores a sequence of up to 255 characters.

Tab-delimited file

A text file that uses tab characters to separate the individual data items in the text file.

Text query

A query that retrieves data directly from text files.

Translation

Allows you to define a relationship between values in the source file and corresponding values that are used for the destination field.

VBScript

A subset of the Microsoft Visual Basic[®] programming language that is embedded into Integration Manager to provide scripting capabilities.

XML

Extensible Markup Language (XML) is the standard method of viewing data on the Web. Rich, structured data from any application can be easily described in a standard and consistent manner through the use of XML. It also is a complementary format of HTML.

XSLT

eXtensible Stylesheet Language for Transformations (XSLT) is used as a part of XSL, which functions as a stylesheet language for XML. XSL includes an XML vocabulary for specifying formatting; XSL specifies the styling of an XML document by using XSLT to describe how the document is transformed into another XML document that uses the formatting vocabulary.

Index

A

- About Integration Manager, command 13
- About this Window, command 13
- accelerator keys 10-12
- access key
 - About Integration Manager 13
 - About this Window 13
 - Add Destination 12
 - Add Source 12
 - Cascade 13
 - Close Integration 12
 - Contents 13
 - Destination Settings 12
 - Exit 12
 - Export Integrations 12
 - Import integrations 12
 - Index 13
 - mapping 12
 - New Integration 12
 - New Integration Group 12
 - Object Browser 13
 - Open Integration 12
 - Open Integration Group 12
 - Options 13
 - Print 12
 - Properties 12
 - Registration 13
 - Remove Script 12
 - Remove Translation 12
 - Run 12
 - Source Settings 12
 - Tile Horizontally 13
 - Tile Vertically 13

adapters

- destination adapters defined 15
- source adapters defined 15

- Add Destination
 - button 10
 - command 12
 - shortcut key 11
- Add Source
 - button 10
 - command 12
 - shortcut key 11

- Add Source window
 - Adapters pane on 25
 - Sources pane on 25, 28

- adding
 - a destination 33
 - a new source 21
- available, sources 21

B

- button
 - Add Destination 10
 - Add Source 10
 - mapping 10
 - New Integration 10

- button (*continued*)
 - Objects 10
 - Open Integration 10
 - Print 10
 - Properties 10
 - Relationships 10
 - Run 10
 - Save 10

C

- Cascade, command 13
- changes since last release, information about 5
- Child Recordset
 - Integration Mapping window for 38
 - Integration Mapping window for completed 39
 - mapping Fields in the 37
- Close Integration, commands 12
- commands
 - About Integration Manager 13
 - About this Window 13
 - Add Destination 12
 - Add Source 12
 - Cascade 13
 - Close Integration 12
 - Contents 13
 - Defined 10
 - Destination Settings 12
 - Exit 12
 - Export Integrations 12
 - File 12
 - Help 13
 - Import Integrations 12
 - Index 13
 - Integration 12
 - Keyboard shortcuts 12
 - Mapping 12
 - New Integration 12
 - New Integration Group 12
 - Object Browser 13
 - Open Integration 12
 - Open Integration Group 12
 - Options 13
 - Print 12
 - Properties 12
 - Registration 13
 - Relationships 12
 - Remove 12
 - Remove Script 12
 - Remove Translation 12
 - Run 12
 - Source Settings 12
 - Tile Horizontally 13
 - Tile Vertically 13
 - Tools 13
- Contents, command 13

- creating
 - a new integration 19
 - a query relationship 31
 - steps to create an integration 2

- creating (*continued*)
 - the GL Header query 24
 - the GL Line query 28

D

- Data Viewer window, for the GL Header query 28
- destination adapters
 - defined 15
 - Microsoft Dynamics GP 33
- Destination Edit Mode 43
- destination mappings, defined 16
- Destination Settings, command 12
- destinations
 - adding to an integration 33
 - defined 15
 - understanding 33
- documentation, symbols and conventions 3

E

- engine, Integration Manager engine
 - defined 15
- errors
 - Maximum Number of 44
 - when running integrations 46
- Exit, command 12
- Export Integrations, command 12

F

- Fields
 - mapping 36
 - mapping in the Child Recordset 37
- File, commands 12

G

- GL Header query
 - Columns tab on Properties window for 27
 - creating 24
 - defined 24
 - General tab on Properties window for 26
 - Properties window for 25
- GL Line query
 - Columns tab on Properties window for 29
 - creating 28
 - defined 24
 - General tab on Properties window for 29
 - Properties window for 28
- GLHEADER.txt file
 - defined 24
 - displayed 23
- GLLINE.txt file
 - defined 24
 - displayed 23

H

- Help, command 13
- help, displaying 4

Help menu, described 4

I

icons, used in manual 3
 Import Integrations, command 12
 Index, command 13
 Integration, command 12
 integration
 creating a new 19
 defined 19
 preparing to run an integration 43
 running an integration 45
 running as an administrator 45
 steps to create 2
 troubleshooting 46

Integration Manager Engine, defined 15
 Integration Manager Main window 9
 Integration Mapping window 35
 Child Recordset on 38
 completed 37
 for the Child Recordset completed 39
 mapping Fields on 36
 opening 35
 Options tab on 40
 understanding 35

Integration Properties window 43
 Integration window 20

L

logs, specifying settings 44
 lookup window, displaying 4

M

Main window, using 9
 Mapping, button 10
 mapping
 command 12
 Fields 36
 Fields in the Child Recordset 37
 Fields on the Integration Mapping window 36
 shortcut key 11
 menus, defined 10
 Microsoft Dynamics GP adapter defined 33

N

navigation, symbols used for 3
 new features, information about 5
 New Integration
 button 10
 commands 12
 shortcut key 11
 New Integration Group, commands 12

O

Object Browser
 command 13
 window, Types pane on 23
 Object Browser window, Objects pane on 23
 Objects, button 10

ODBC/Text
 defined 21
 sources types 21

Open Integration
 button 10
 commands 12
 shortcut key 11
 Open Integration Group, commands 12
 Options, command 13
 options, specifying 39

P

permission issues, integration 45
 preparing, to run an integration 43
 prerequisites 3
 previewing, source data 27
 Print
 command 12
 shortcut key 11
 Print button 10
 Procedures
 creating a new integration 19-20
 creating GL Header query 24-27
 creating GL Line query 28-??
 creating query relationships 31-32
 mapping fields 36-37
 mapping Fields in the Child Recordset 38-39
 opening the destination Integration Mapping window 35
 preparing to run the integration 43-45
 previewing source data 27-28
 removing source queries 22-23
 running an integration 45-46
 verifying results 47-48

Properties

 button 10
 command 12

Properties window

 Columns tab on GL Header query 27
 Columns tab on GL Line query 29
 displaying 19
 for GL Header query 25
 General tab on GL Header query 26
 General tab on GL Line query 29
 GL Line query 28

Q

query
 creating a relationship 31
 defined 16
 duplicate source query names 21, 22
 GL Header 24
 GL Line 28
 relationship defined 16

R

Registration, command 13
 Relationships
 button 10
 command 12
 shortcut key 11

Relationships window 31, with
 relationship defined 32
 Remove, command 12
 Remove Script, command 12
 Remove Translation, command 12
 required fields, described 4
 resources, documentation 4
 results, verifying 47
 Rules, Use Negative Source Rule 35
 Run
 button 10
 command 12
 shortcut key 11
 running, Integration Manager 9

S

Save button 10
 Save Integration, shortcut key 11
 shortcut keys 10-12
 source
 adding a new 21
 defined 15, 21
 duplicate query names 21, 22
 previewing data 27
 understanding sample files 23
 source adapters, defined 15
 Source Object window 36
 source sample files 23
 Source Settings, command 12
 specifying
 log settings 44
 options 39
 starting, Integration Manager 9
 symbols, used in manual 3
 symbols and conventions, defined 3

T

terminology 15
 Tile Horizontally, command 13
 Tile Vertically, command 13
 Tools, command 13
 troubleshooting, integrations 46

U

Use Negative Source Rule 35

V

verifying, results 47

W

warnings
 Maximum Number of 44
 when running integrations 46
 what's new, accessing 5

X

XML, Source Adapter defined 21