

# SKID STEER LOADER PARTS CATALOG



Weifang Baomax Construction Machinery Co.,ltd  
Michael@baomax.com; www.baomax.com;

# CONTENT

1 MUFFLER ASSEMBLY.....	3
2 AIR FILTER.....	4
3 ENGINE I.....	5
4 ENGINE II.....	6
5 CHASSIS INNER -1.....	7
6 CHASSIS INNER -2.....	9
7 TYPE ASSEMBLY.....	11
8 CAB AND FRAME.....	12
9 DOOR ASSEMBLY.....	13
10 CAB.....	14
11 CAB.....	15
12 ACCESS DOOR, UPPER.....	16
13 ACCESS DOOR, LOWER.....	17
14 LIFT HOOK.....	18
15 BUCKET.....	19
16 LIFT ARM.....	20
17 HYDRAULIC SYSTEM AND FITTING.....	21
18 HYDRAULIC SYSTEM AND FITTING.....	22
19 PIPE AND TUBE,LIFT ARM.....	23

20 HYDRAULIC PIPE-1 .....25  
21 HYDRAULIC PIPE-2.....26  
22 HYDRAULIC PIPE-3.....27  
23 CONTROL JOYSTICR ASSY. -1.....28  
24 CONTROL JOYSTICR ASSY. -2.....29  
25 DECALS 1.....30  
26 DECALS 2.....31  
27 DECALS 3.....32  
28 WIRING CONNECTION DRAWING.....33





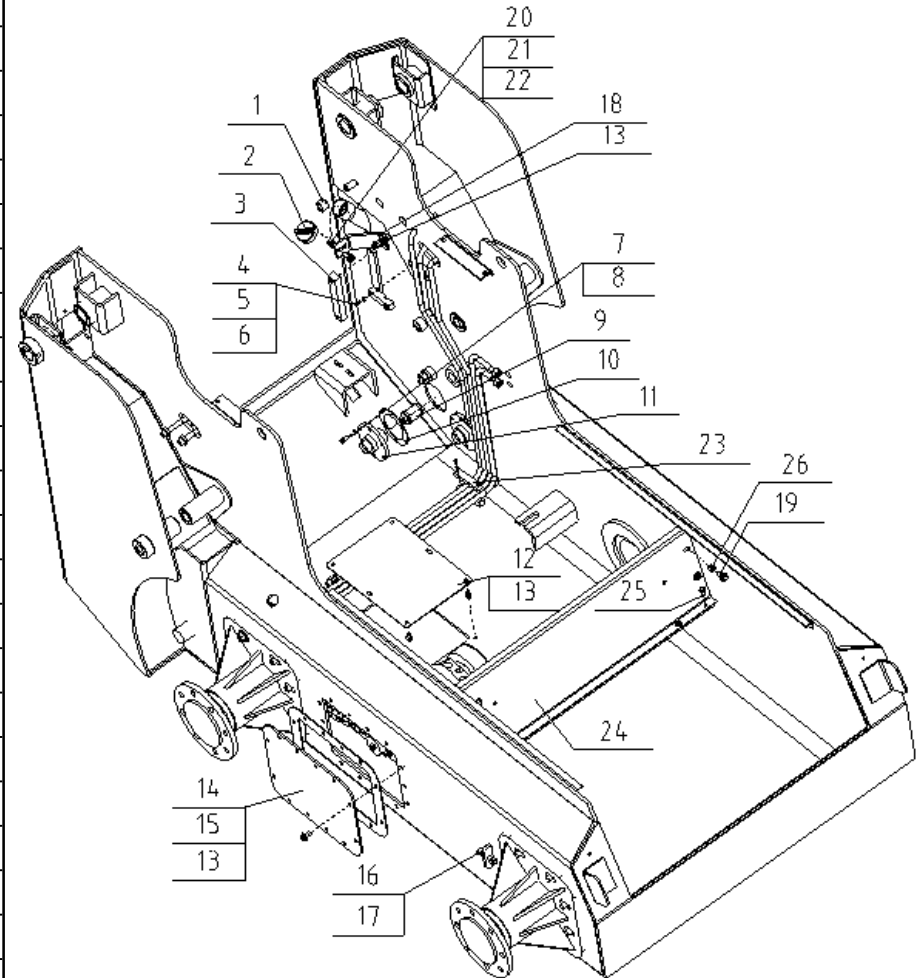




## CHASSIS INNER -1

## 750D-01

ITEM	DESCRIPTION	Q'TY	PART NO.
1	Shock Cushion	2	SSL650-03-050004
2	Oil tank cover	1	216GR-22052
3	Hydraulic Oil Level Gauge	1	YWZ-127
4	pipe bracketI	1	SSL650-08-000034A
5	spring washer 8	10	GB/T93-1987
6	bolt M8x30	10	GB/T5783-2000
7	hexagon bolt M8x20	12	GB/T5783-2000
8	spring washer 8	12	GB/T93-1987
9	Mesh Filter	2	WU-100X180J (φ75x125)
10	Flange Washer	2	SSL650-08-000020
11	Flange, Hydraulic Oil Input	2	SSL650-08-000100
12	boot cover,frame	1	SSL750D-01-020001
13	flange bolt M10x16	34	GB/T5789-2000
14	side plate	2	SSL700-01-020021
15	Seal Washer, Side Plate	2	SSL700-01-020018
16	round screw M12x45	4	GB/T70.1-2000
17	nut M12	4	GB/T6170-2000
18	Support,radiator	1	SSL750D-08-000005
19	flange bolt M10x25	4	GB/T5789-2000
20	hexagon bolt M8x25	1	GB/T5783-2000
21	spring washer 10	11	GB/T93-1987
22	washer 10	4	GB/T95-1985
23	Upper plate	3	SSL650-08-000033
24	Backplate	1	SSL750D-01-020100
25	flange bolt M8x20	4	GB/T5789-2000
26	locknut M8	4	Q33208

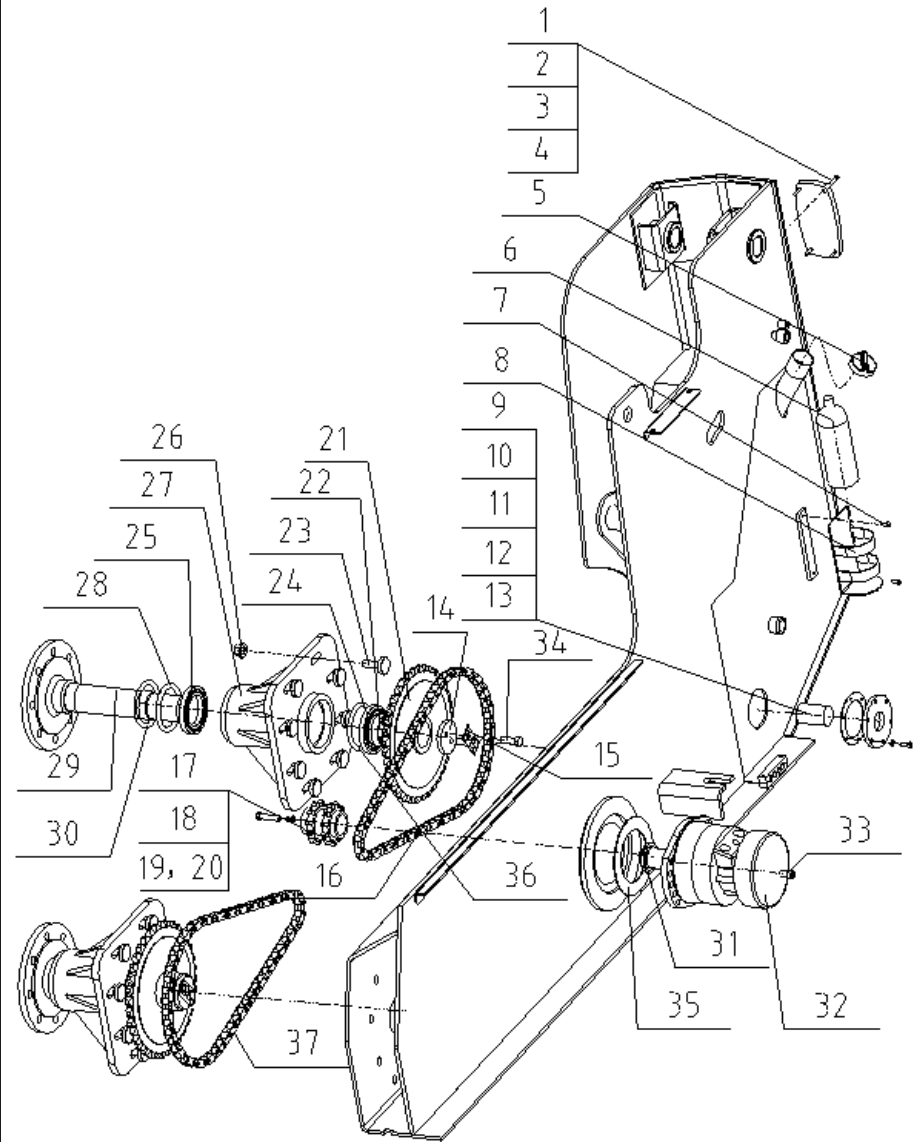




## CHASSIS INNER -2

## 750D-01

ITEM	DESCRIPTION	Q'TY	PART NO.
1	screw M4x35	8	GB/T818-2000
2	spring washer 4	8	GB/T93-1987
3	nut M4	8	GB/T6170-2000
4	Light, rear	2	216GR-22052
5	Cover, fuel tank	1	N163-341000-0000
6	Antifreeze Tank	1	SSL750A-01-020048
7	screw M6x10	2	GB/T819.1-2000
8	Bracket, Antifreeze Tank	1	SSL750A-01-020700
9	fuel filter	1	SFM 439A
10	flange rubber	1	SSL650-08-000025
11	flange	1	SSL650-08-000028
12	hexagon bolt M8x25	6	GB/T5783-2000
13	spring washer 8	6	GB/T93-1987
14	Bearing Baffle	4	SSL750A-01-020023
15	Output Shaft Lock	4	SSL750A-01-020029
16	Chain 80-1-56	2	GB/T1243-1997
17	Motor Chain Wheel	2	SSL700-01-020005
18	bolt M12x50 (12.9)	2	GB/T5782-2000
19	spring washer 12	2	GB/T93-1987
20	washer 12	2	GB/T95-2002
21	Output Chain Wheel	4	SSL700-01-020001
22	Output Shaft Bush	4	SSL750D-01-020003
23	bolt	32	SSL750A-01-020015
24	TIMKEN bearing	8	390A
25	TIMKEN bearing	8	394A
26	flange nut M16	32	GB/T6177.1-2000



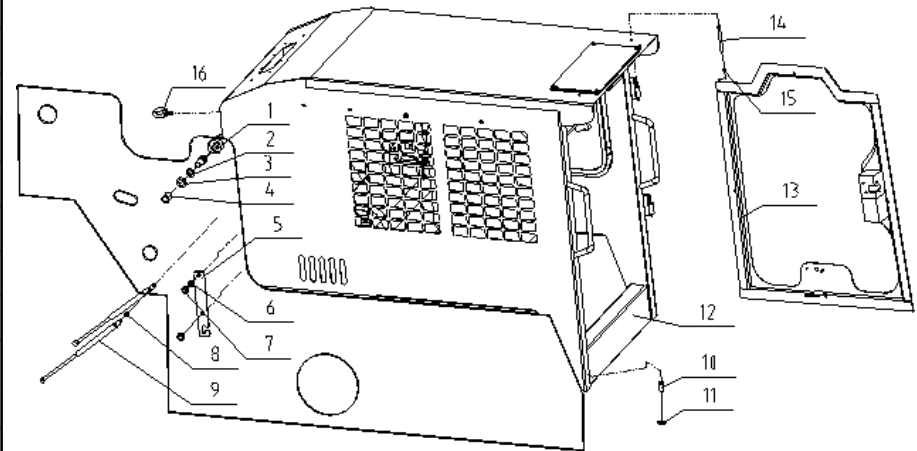




## CAB AND FRAME

## 750D-02

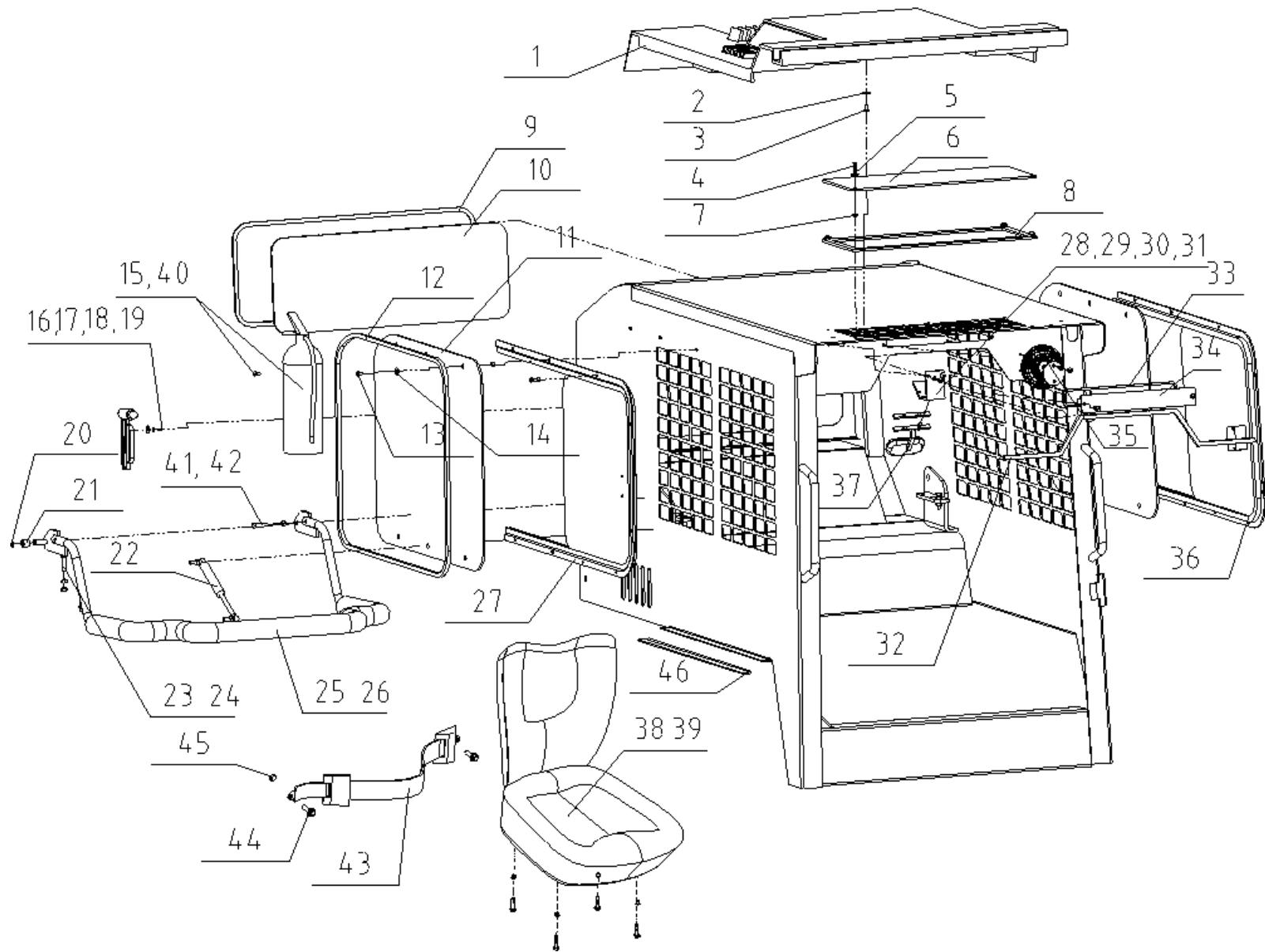
ITEM	DESCRIPTION	Q'TY	PART NO.
1	Hexagon bolt M20x65	2	GB/T5783-2000
2	spring washer 20	2	GB/T93-1987
3	bushing 2	2	SSL750D-02-000013
4	bushing 1	2	SSL750D-02-000011
5	Locking Plate	1	SSL750D-02-000001
6	nut 12	1	GB/T6172.1-2000
7	Hexagon bolt M12x40	2	GB/T5783-2000
8	locknut M8	4	Q33208
9	Air Spring	2	SSL750D-02-000010
10	Hexagon bolt M12x30	2	GB/T5783-2000
11	flat gasket 12	2	GB/T5287-2002
12	Cab assy.	1	SSL750D-02-010000
13	Door Assy.	1	SSL750D-02-020000
14	pin,door	2	SSL750-02-000021X
15	Check Ring, Shaft10	2	GB/T894.1-1986
16	screw M12x22	2	GB/T825-1998
17	collar	2	SSL750D-02-000009
18	oil bottle M6	2	JB/T7940.1-1995





# CAB

# 750D-02



## CAB

ITEM	DESCRIPTION	Q'TY	PART NO.
1	Plate, Air Conditioner	1	SSL750A-02-000200
2	Upper cover	1	SSL750A-02-000031
3	screw M6x15	6	SSL750A-02-000042
4	screw M6x20	6	SSL750A-02-000043
5	Cover pads	1	SSL750A-02-000029
6	Upper Glass	1	SSL750D-02-000007
7	locknut M6	45	Q33206
8	rubber	1	SSL750D-02-000008
9	rubber	1	SSL750A-02-000032
10	Rear Glass	1	SSL750D-02-000004
11	Fixed Glass	2	SSL750D-02-000002
12	rubber	2	SSL750A-02-004010X
13	screw M6x35	8	SSL750A-02-020046
14	Shock Cushion, Glass	14	SSL750A-02-004001X
15	Fire Extinguisher	1	MFJ-450
16	screw M3x15	3	GB/T818-2000
17	Hammer	1	HR-D
18	big washer 3	3	GB/T5287-2002
19	spring washer 3	3	GB/T93-1987
20	Check Ring, Shaft 12	2	GB/T894.1-1996
21	Bushing	2	SSL750A-02-000008
22	Air Spring	1	SSL750A-02-040100
23	bolt M8x40	2	GB/T5783-2000
24	nut M8	4	GB/T6170-1987
25	Bumper	1	SSL750D-02-040000
26	Seat Bar	1	SSL750D-02-000014

## 750D-02

ITEM	DESCRIPTION	Q'TY	PART NO.
27	permanent seat	1	SSL750D-02-050000
28	mirror support	1	SSL750D-02-000012
29	screw M6x25	2	GB/T818-2000
27	permanent seat	1	SSL750D-02-050000
30	nut M6	2	GB/T6170-2000
31	rubber	1	SSL650-02-010055
32	Panel	1	7Y-850C.11.218
33	rubber	1	SSL750D-02-000006
34	Front glass	1	SSL750D-02-000005
35	Fan	1	SSL750A-02-000042
36	Side Glass, Right	1	SSL750D-02-060000
37	Rearview Mirror	1	1018
38	screw M5x12	8	GB/T819.1-2000
39	seat	1	50
40	nut M6*12	2	GB/T818-2000
41	bolt M8x40	1	GB/T5783-2000
42	nut M8	1	GB/T6170-2000
43	safety belt	1	HXQES-IA
44	flange bolt M10x20	2	GB/T5789-2000
45	locknut M10	2	Q33210
46	shock cushion rubber	1	SSL700-02-020700
47	header bond	1	SSL750D-02-042000





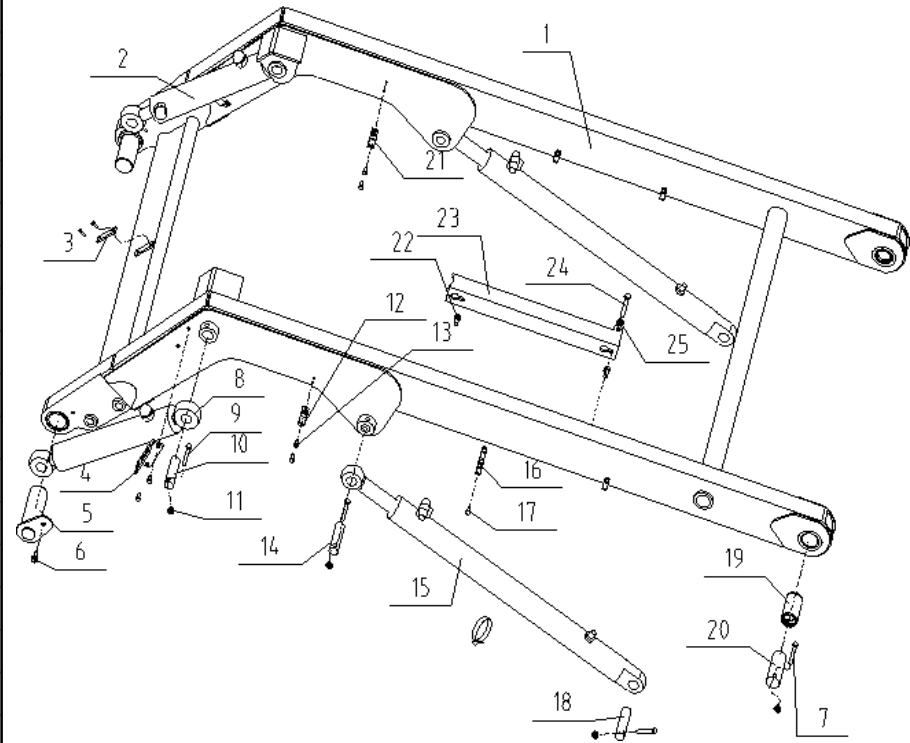




# LIFT ARM

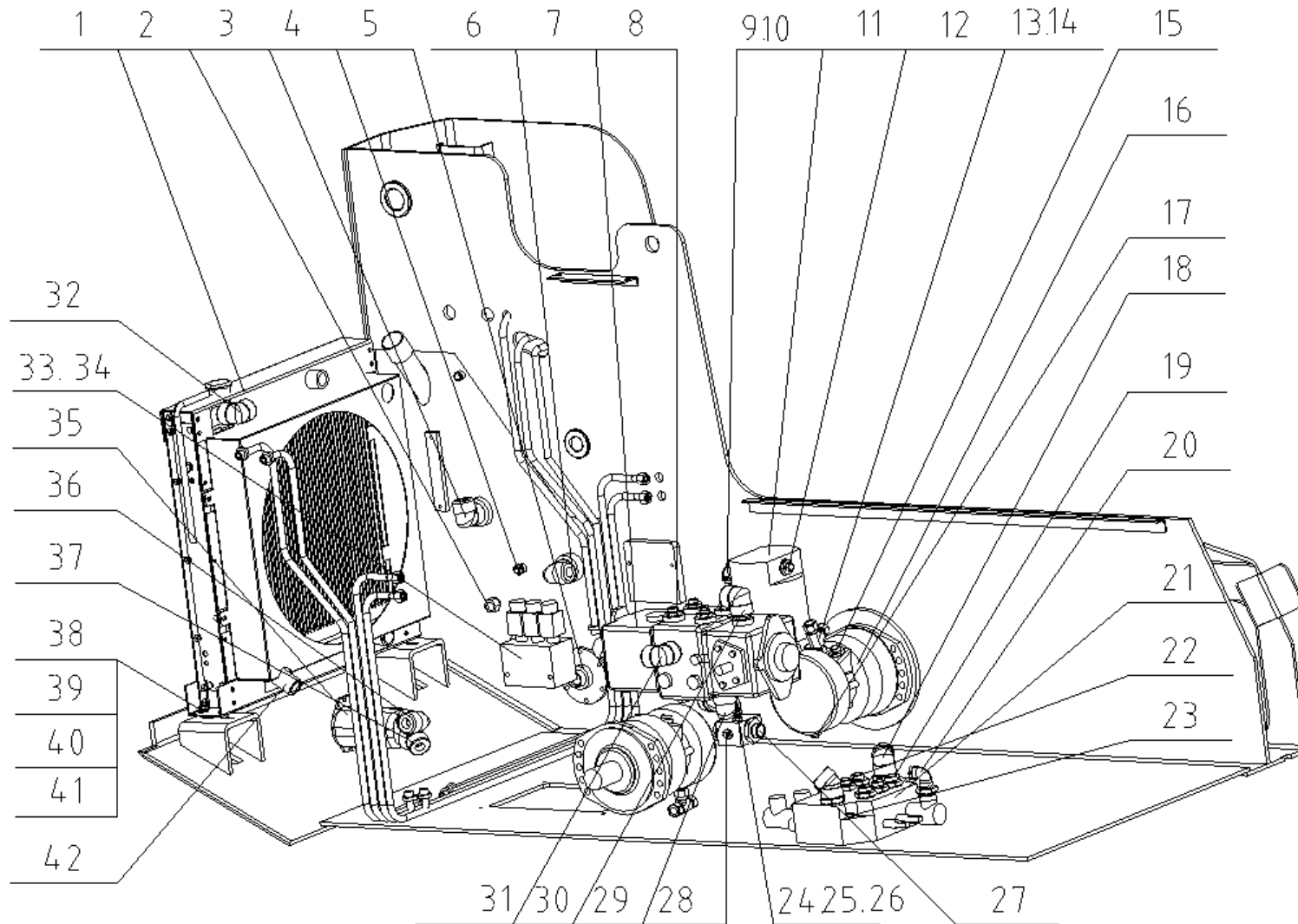
# 750D-07

ITEM	DESCRIPTION	Q'TY	PART NO.
1	Lift Arm	1	SSL750D-07-010000
2	Bucket Cylinder,right	1	SSL750D-08-020110
3	Fixed Clip, Pipe	1	SSL650-08-000034A
4	Fixer, Coupler	1	SSL750D-07-020001
5	Rear pin	2	SSL750D-07-020100
6	flange bolt M10x16	4	GB/T5789-2000
7	hexagon bolt M10x90	2	GB/T5782-2000
8	Bucket Cylinder,left	1	SSL750D-08-020120
9	hexagon bolt M10x75	6	GB/T5782-2000
10	Upper Pin,Bucket Cylinder	2	SSL750D-07-020002
11	locknut M10	8	Q33210
12	Fixed Clip, Pipe	1	SSL750D-08-000004
13	hexagon bolt M8x30	10	GB/T5783-2000
14	Upper Pin,Lift Cylinder	2	SSL750D-07-020003
15	lift cylinder	2	SSL750D-08-010200
16	Fixed Clip, Pipe	4	SSL750D-08-000002
17	flange bolt M8x15	16	GB/T5789-2000
18	Lower Pin	2	SSL750D-01-020005
19	Bushing	2	SSL750D-07-010004
20	Upper Pin	2	SSL750D-01-020004
21	Fixed Clip, Pipe	2	SSL750D-08-000003
22	flange bolt M12x20	2	GB/T5789-2000
23	Bumper,Oil Cylinder	1	SSL750D-07-020004
24	hexagon bolt M12x80	1	GB/T5782-2000
25	hexagon nut M12	1	GB/T6170-2000
26	Oil bottle M10x1		JB/T7940.1-1995
27	Hose hoops φ90-φ110		ZBJ-15001-87



# HYDRAULIC SYSTEM & FITTING

# SSL750D-08

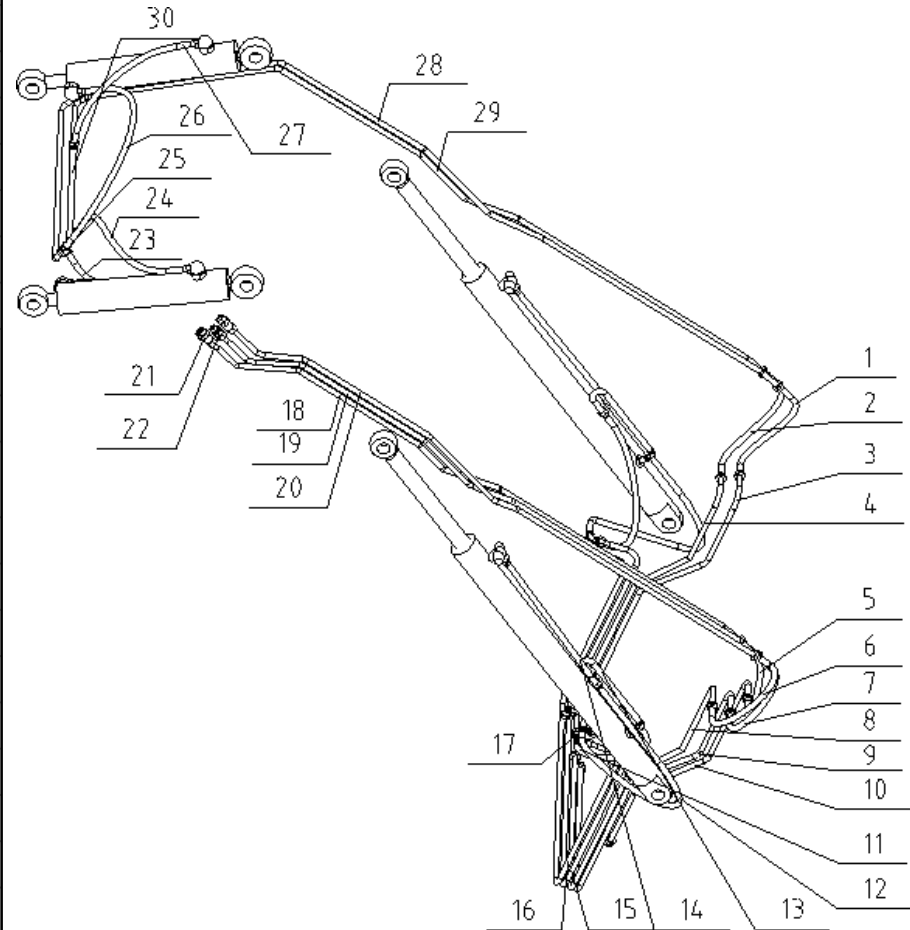




## PIPE AND TUBE,LIFT ARM

**750D-08**

ITEM	DESCRIPTION	Q'TY	PART NO.	RMKS
1	high-pressure hose	1	N381HAHF121206-660-STH	
2	high-pressure hose	1	N381HAHF121206-700-STH	
3	Pipe B,tilt cylinder	1	SSL750D-08-004040	
4	Pipe A,tilt cylinder	1	SSL750D-08-004030	
5	high-pressure hose	1	N381HAHF121206-700-STH	
6	high-pressure hose	1	N381HAHF121206-660-STH	
7	high-pressure hose	1	N381HAHF121206-600-STH	
8	Pipe A,attachments	1	SSL750D-08-004050	
9	Pipe B,attachments	1	SSL750D-08-004060	
10	Oil-return pipe,attachments	1	SSL750D-08-004070	
11	high-pressure hose	2	N381HAHF121206-660-STH	Pipe,lift cylinder
12	high-pressure hose	2	N381HAHF121206-700-STH	attachments pipe lift cylinder hose
13	pipe C,lift cylinder	2	SSL750D-08-004140	
14	pipe D,lift cylinder	2	SSL750D-08-004170	
15	pipe B,lift cylinder	1	SSL750D-08-004020	
16	pipe A,lift cylinder	1	SSL750D-08-004010	
17	Fitting	4	6C9-18LN	
18	Pipe 3,attachments	1	SSL750D-08-004120	
19	Pipe 2,attachments	1	SSL750D-08-004110	
20	Pipe 1,attachments	1	SSL750D-08-004100	
21	Quick Coupler, Male	1	FIRG-F-G1/2"	
22	Quick oupler, Male/female	1	FIRG-FM-G1/2"	
23	high-pressure hose	1	N381HAHF121206-480-STH	
24	high-pressure hose	1	N381HAHA121206-540-STH	

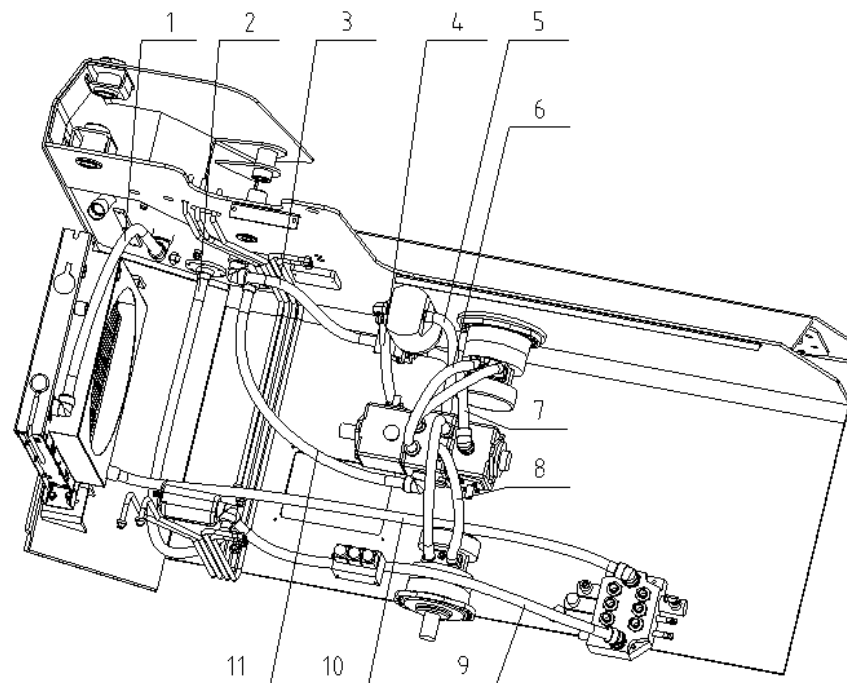




## HYDRAULIC PIPE-1

## 750D-08

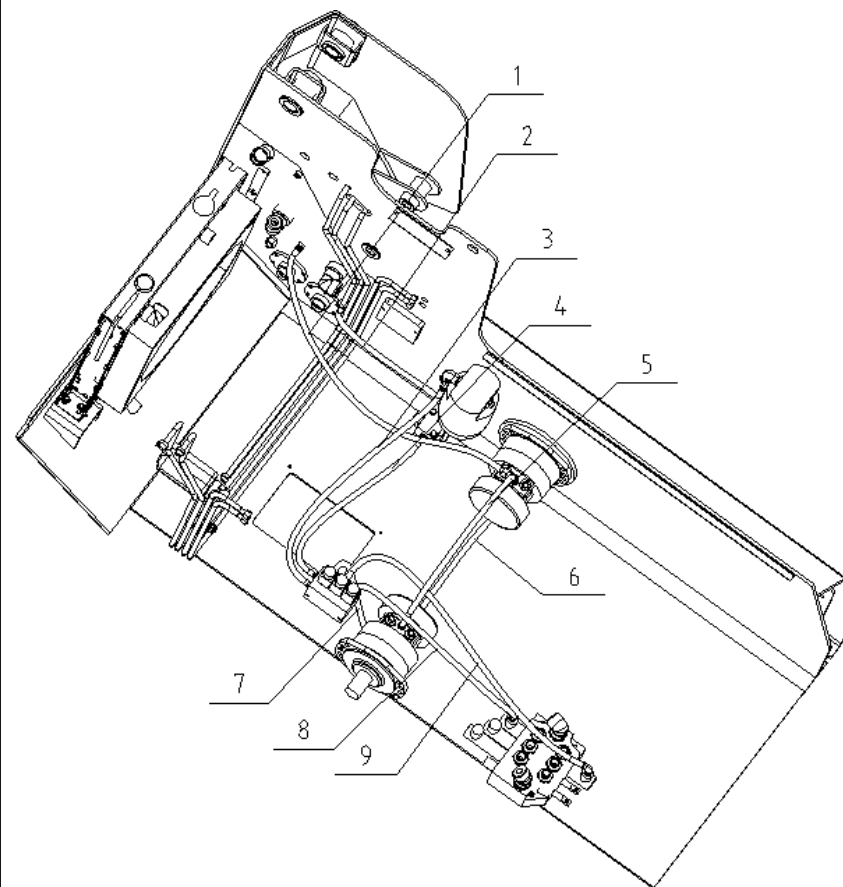
ITEM	DESCRIPTION	Q'TY	PART NO.	RMKS
1	high-pressure hose	1	N381HAHA282816-850	radiator-oil tank
2	high-pressure hose	1	N481HAHF282816-1000	oil tank-gear pump
3	high-pressure hose	1	N381HAHA282816-500-STH	valve block-oil tank
4	high-pressure hose	1	N381HAHF181812-650	pressure filter-master pump
5	high-pressure hose	1	N381HAHF181812-650	master pump-pressure filter
6	high-pressure hose	2	N781HAHA181812-620	master pump-left motor
7	high-pressure hose	1	N381HAHA282816-850-STH	master pump-valve block
8	high-pressure hose	2	N781HAHA181812-650	master pump-right motor
9	high-pressure hose	1	N381HAHA181812-1000-STH	gear pump-control valve
10	high-pressure hose	1	N381HAHA222212-1360-STH	control valve-radiator
11	high-pressure hose	1	N481HAHA282816-1300-STH	radiator-master pump



## HYDRAULIC PIPE-2

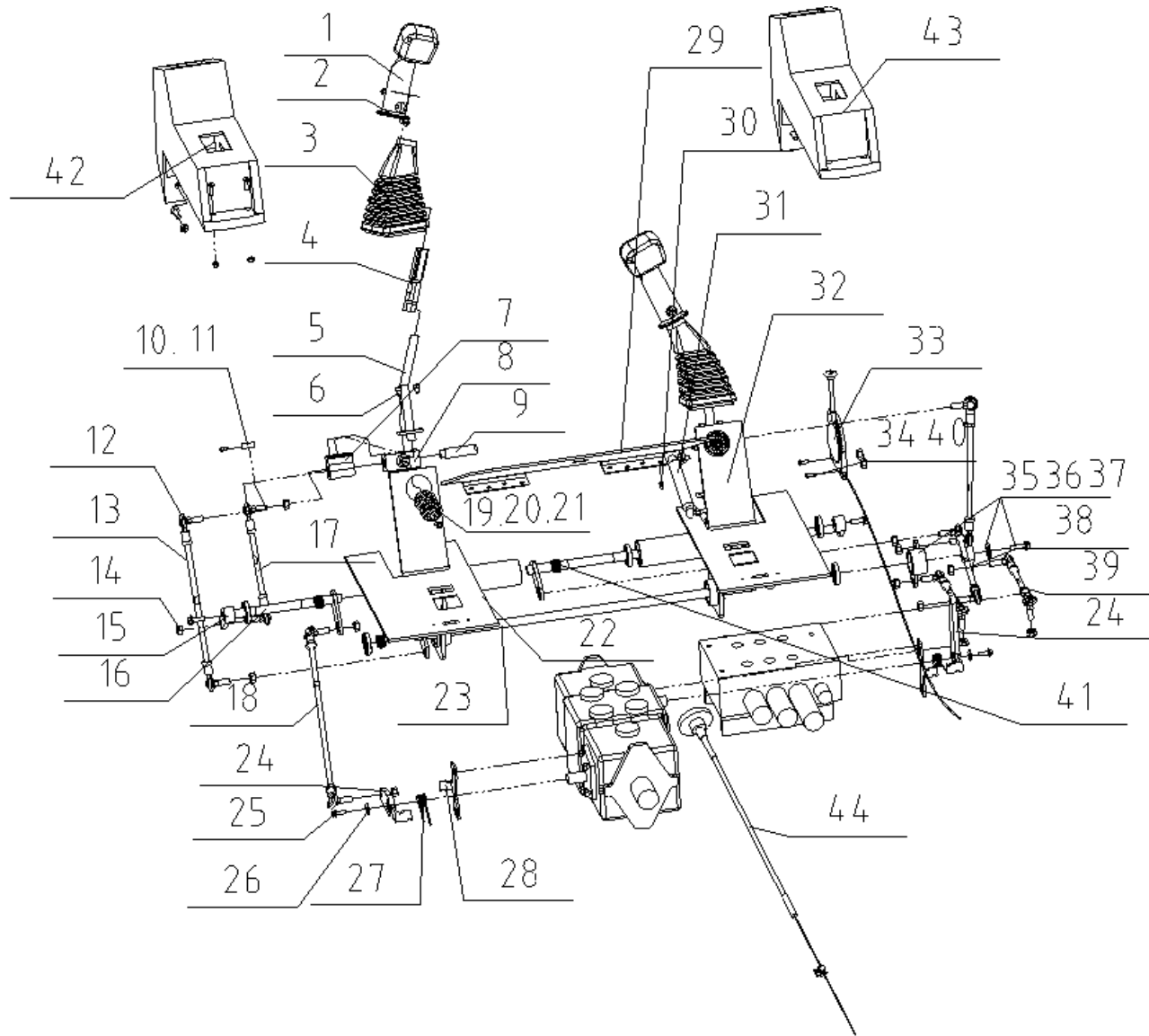
**750D-08**

ITEM	DESCRIPTION	Q'TY	PART NO.	RMKS
1	Hydraulic pipe	1	N381HAHF121206-1100-STH	oil-return three-way,left motor-oil tank
2	Hydraulic pipe	1	N381HAHF121206-320-STH	oil-return pipe-valve block
3	Hydraulic pipe	1	N381HAHF121206-1100-STH	pressure filter-Electromagnetic Valve
4	Hydraulic pipe	1	N381HAHF121206-900-STH	Electromagnetic Valve-valve block
5	Hydraulic pipe	1	N381HAHA121206-720-STH	oil-return three-way,right motor-oil tank
6	Hydraulic pipe	1	N381HAHF121206-660-STH	three-way-left motor control
7	Hydraulic pipe	1	N381HAHF121206-510	Electromagnetic Valve-right motor control
8	Hydraulic pipe	1	N381HAHF121206-600-STH	Electromagnetic Valve-attachements
9	Hydraulic pipe	1	N381HAHF121206-510	Electromagnetic Valve-attachments





# CONTROL JOYSTICK ASSY. -1 750D-09



## CONTROL JOYSTICK ASSY. -2 750D-09

ITEM	DESCRIPTION	Q'TY	PART NO.
1	Plastic joystick	2	SSL750-09-000026
2	Screw M5x35	4	GB/T818-2000
3	Handle sleeve	2	SSL750-09-000010
4	Handle joystick	2	SSL750-09-000027
5	Handle joystick assy.	2	SSL750D-09-005000
6	Round bolt M6x20	8	GB/T70.1-2000
7	Movable joint	2	SSL750-09-000004
8	Connect joint	2	SSL750-09-000022
9	Sliding shaft	2	SSL750-09-000005
10	Limited block	2	SSL550-09-000014
11	Round bolt M4x12	4	GB/T70.1-2000
12	Bearing	8	SSL750-09-000006
13	Threaded rod,control valve	2	SSL750D-09-000001
14	Locknut M10x1.25	14	GB/T6185.2-2000
15	Connect support	2	SSL750-09-000002
16	Axostyle	2	SSL750D-09-003000
17	Threaded rod	2	SSL750D-09-000005
18	Pull rod II,pump	1	SSL750D-09-000007
19	Bearing 6203-2RS	12	GB/T276-1994
20	spacer	2	SSL750D-09-000017
21	Flange bolt M6x20	4	GB/T5789-1986
22	Left base assy.	1	SSL750D-09-001000
23	Control axostyle	1	SSL750D-09-004000
24	Support plate	2	SSL750D-09-007000
25	Flange bolt M6x20	2	GB/T5789-1986
26	spacer	2	SSL750D-09-000018

ITEM	DESCRIPTION	Q'TY	PART NO.
27	spring	2	SSL750A-00-020001
28	Support plate,torsional spring	2	SSL750D-09-000008
29	Seat baseboard assy.	1	SSL750D-02-030000
30	Screw	8	GB/T6170-2000
31	gas spring	1	SSL750A-02-040100
32	Right base assy.	1	SSL750D-09-002000
33	Hand Throttle	1	SSL750D-09-000010
34	Flange bolt M6x30	2	GB/T1789-2000
35	Axle sleeve	1	SSL750D-09-006000
36	control bushing	1	SSL750D-09-000016
37	Flang bolt M10x25	4	GB/T5789-1986
38	Pull rod I,pump	1	SSL750D-02-000006
39	Threaded rod,arm	2	SSL750D-02-000003
40	Locknut M6	2	Q33206
41	Spring	3	SSL750-09-000003
42	Bracket,left control joystick	2	SSL750D-09-000014
43	Bracket,right control joystick	1	SSL750D-09-000015
44	Flameout Pullstring	1	SSL750D-09-000011
45	permanent seat	2	SSL650-09-000022
46	bearing	6	SSL750-09-000007
47	spring	1	SSL750D-09-000013
48	Bolt M8*30	4	GB/T5789-1986
49	Nut M10*1.25	8	GB/T6171-2000
50	Nut M10*1.25	8	GB/T6171-2000







